

SAFETY STATIONS 2

METAL SAFETY CABINETS 7

POLYETHYLENE SAFETY CABINETS 13

WOOD LAMINATE SAFETY CABINETS 13

WOODEN SAFETY CABINETS 14

SAFETY EQUIPMENT 17

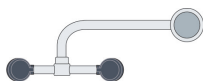
Rev: 08-27-24

©2024 STEVENS INDUSTRIES, INC.
ALL RIGHTS RESERVED.
Due to continuing product
development, Stevens reserves
the right to change specifications
without notice.

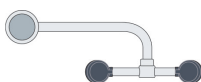
EYE/FACE WASH

DECK MOUNTED
AUTOFLOW™
90° SWIVEL

RIGHT HAND MOUNTING



LEFT HAND MOUNTING



52FE774



Right Hand Mounting — **52FE774-RH**

Left Hand Mounting — **52FE774-LH**

APPLICATION:

AutoFlow™ eye/face wash for mounting on counter next to sink. Ideal for use in highly corrosive environments. Swinging the spray head assembly horizontally out over the sink activates the water flow. Unit remains in operation until spray head assembly is swung back into storage position, closing the valve.

CONSTRUCTION:

Polished chrome plated brass

MOUNTING:

Mounted on countertop on right side of sink (52FE774-RH).
For Left side mounting use 52FE774-LH.

SPRAY HEAD ASSEMBLY:

Two FS-Plus™ spray heads. Each head has a "flip top" dust cover, internal flow control and filter to remove impurities from the water flow.

VALVE:

1/2" IPS plug-type valve with PTFE coated O-ring seals.

STRAINER:

Furnished with in-line strainer to protect valve and spray heads from debris in water line.

SUPPLY:

1/2" NPT female inlet.

SIGN:

ANSI-compliant identification sign.

EYE WASH

DECK MOUNTED
AUTOFLOW™
90° SWING-DOWN

52EW849



APPLICATION:

AutoFlow™ eyewash for mounting on counter. Spray heads swing down from storage to operational position, activating water flow.

Note: If unit is not installed at a sink, floor drain should be provided underneath unit to prevent accumulation of water on floor.

CONSTRUCTION:

Polished chrome plated brass.

MOUNTING:

Mounted on countertop behind sink.

SPRAY HEAD ASSEMBLY:

Two GS-Plus™ spray heads. Each head has a "flip top" dust cover, internal flow control and filter to remove impurities from the water flow.

VALVE:

1/2" IPS plug-type valve with PTFE coated O-ring seals.

STRAINER:

Furnished with in-line strainer to protect valve and spray heads from debris in water line.

SUPPLY:

1/2" NPT male inlet.

SIGN:

ANSI-compliant identification sign.

**WIDEAREA™
EYE/FACE WASH**

**WALL MOUNTED
BARRIER-FREE**

52FEBF724



APPLICATION:
Barrier-Free WideArea™ eye/face wash for wall mounting. Bowl is lowered and extended to permit access by wheelchair user. Profile of unit is "flattened" to comply with maximum height and knee clearance requirements.

ADA COMPLIANCE:
When installed at recommended mounting height, unit complies with ADA requirements for accessibility by handicapped persons.

SPRAY HEAD ASSEMBLY:
Four GS-Plus™ spray heads. Each head has a "flip top" dust cover, internal flow control and filter to remove impurities from the water flow.

VALVE:
1/2" IPS chrome plated brass stay-open ball valve. Valve is US-made with chrome plated brass ball and PTFE seals.

BOWL:
11-1/8" diameter stainless steel.

MOUNTING:
Welded stainless steel wall bracket.

SUPPLY:
1/2" NPT female inlet.

WASTE:
1-1/2" OD chrome plated brass tailpiece.

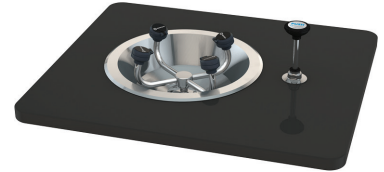
SIGN:
ANSI-compliant identification sign.

**WIDEAREA™
EYE/FACE WASH**

**RECESS DECK
MOUNTED**

**PUSH-DOWN
VALVE**

52FE727



APPLICATION:
WideArea™ eye/face wash for recessed mounting in countertop. Four GS-Plus™ spray-type outlet heads deliver a flood of water over a wide area of coverage for complete rinsing of eyes and face.

SPRAY HEAD ASSEMBLY:
Four GS-Plus™ spray heads. Each head has a "flip top" dust cover, internal flow control and filter to remove impurities from the water flow.

VALVE:
1/2" IPS brass stay-open ball valve. Valve mounted below counter and activated by push-down knob.

BOWL:
13" diameter flanged stainless steel bowl for recessed mounting in countertop.

VALVE SUPPLY:
1/2" NPT male inlet.

WASTE:
1-1/4" NPT female outlet.

SIGN:
ANSI-compliant identification sign.

EYEWASH

DRENCH HOSE
UNIT

DECK MOUNTED

52EW1020



APPLICATION:
Drench hose unit for deck mounting. Ideal for rinsing any part of user's eye, face or body.

SPRAY HEAD:
Single FS-Plus™ spray head. Spray head has a "flip top" dust cover, internal flow control and filter to remove impurities from the water flow.

VALVE:
Forged brass squeeze valve activated by stainless steel lever handle. Valve has replaceable stainless steel seat for exceptional durability. Valve closes when lever handle is released.

HOSE:
8' reinforced PVC hose. 275 PSI maximum working pressure.

MOUNTING:
Deck flange for countertop mounting.

SUPPLY:
3/8" NPT male swivel-type inlet.

SIGN:
ANSI-compliant identification sign.

EYEWASH

DRENCH HOSE
UNIT

WALL MOUNTED

52EW1025



APPLICATION:
Drench hose unit for wall mounting. Ideal for rinsing any part of user's eye, face or body.

SPRAY HEAD ASSEMBLY:
Single FS-Plus™ spray head. Spray head has a "flip top" dust cover, internal flow control and filter to remove impurities from the water flow.

VALVE:
Forged brass squeeze valve activated by stainless steel lever handle. Valve has replaceable stainless steel seat for exceptional durability. Valve closes when lever handle is released.

HOSE:
8' reinforced PVC hose. 275 PSI maximum working pressure.

MOUNTING:
Wall mounted hook holds unit on wall.

SUPPLY:
3/8" NPT male swivel-type inlet.

SIGN:
ANSI-compliant identification sign.

**EMERGENCY
SHOWER**

**HORIZONTALLY
MOUNTED**

BARRIER-FREE

52ESBF643



APPLICATION:
Barrier-Free emergency shower for horizontal mounting. Unit should be installed so shower head is at least 82" above floor and 32" from wall or nearest obstruction.

ADA COMPLIANCE:
When installed at recommended mounting heights, unit complies with ADA requirements for accessibility by handicapped persons.

SHOWER HEAD:
10" diameter. with 20 GPM flow control. Orange ABS plastic.

VALVE:
1" IPS chrome plated brass stay-open ball valve. Valve is US-made with chrome plated brass ball and PTFE seals. Furnished with stainless steel actuating arm and 59-1/2" stainless steel pull rod.

PIPES AND FITTINGS:
1" IPS galvanized steel nipple and street elbow.

SUPPLY:
1" NPT female inlet.

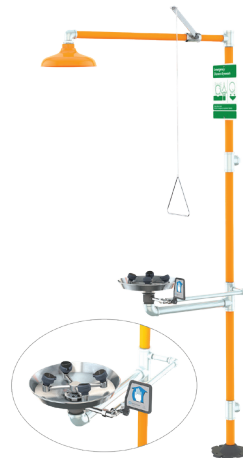
SIGN:
ANSI-compliant identification sign.

SAFETY STATION

**WIDEAREATM EYE/
FACE WASH**

SHOWER HEAD

BARRIER-FREE



52SSBF909

APPLICATION:
Barrier-Free combination WideArea™ eye/face wash and shower safety station. Shower head and pull rod are extended for improved access. Bowl is lowered and extended to permit access by wheelchair user. Profile of unit is "flattened" to comply with maximum height and knee clearance requirements.

ADA COMPLIANCE:
Unit complies with ADA requirements for accessibility by handicapped persons.

SHOWER HEAD:
10" diameter with 20 GPM flow control. Orange ABS plastic.

SHOWER VALVE:
1" IPS chrome plated brass stay-open ball valve. Valve is US-made with chrome plated brass ball and PTFE seals. Furnished with stainless steel actuating arm and 47-1/2" stainless steel pull rod.

SPRAY HEAD ASSEMBLY: Four GS-Plus™ spray heads. Each head has a "flip-top" dust cover, internal flow control and filter to remove impurities from water flow.

EYE/FACE WASH BOWL: 11-1/8" diameter stainless steel.

EYE/FACE WASH VALVE: 1/2" IPS chrome plated brass stay-open ball valve. Valve is US-made with chrome plated brass ball and PTFE seals.

PIPE AND FITTINGS: Schedule 40 galvanized steel. Furnished with orange polyethylene pipe covers for high visibility and corrosion resistance.

SUPPLY:
1-1/4" NPT female top or side inlet.

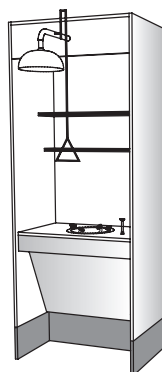
WASTE:
1-1/4" NPT female outlet.

SIGN:
ANSI-compliant identification sign.

- Unit not available with separate base
- Materials used are moisture resistant

ADA BARRIER-FREE SAFETY STATION

47699



W : 36, 39, 42
H : 90
D : 23, 24

- 2 Fixed Shelves
- Phenolic Top
- Front Access Panel
- Shower Head with Pull Rod
- Spray Head Eye/Face Wash
- Push-Down Valve
- Recessed Stainless Steel Bowl

ADA BARRIER-FREE SAFETY STATION WITH ALARM

47700



W : 36, 39, 42
H : 90
D : 23, 24

- 2 Fixed Shelves
- Phenolic Top
- Front Access Panel
- Shower Head with Pull Rod
- Spray Head Eye/Face Wash
- Push-Down Valve
- Recessed Stainless Steel Bowl
- Alarm AP280-235

FLAMMABLE LIQUID

Before purchasing any flammable liquid storage cabinet, familiarize yourself with all local and state codes from the appropriate agencies having jurisdiction in your area.

STAND-ALONE



52122FY

W: 43
H: 44
D: 18

- 30-Gallon
- Self-Closing Doors
- Locking Handle with 2 keys (accepts padlock, not included)
- 1 Adjustable Shelf
- Yellow

STAND-ALONE



52126FY

W: 43
H: 65
D: 18

- 45-Gallon
- Self-Closing Doors
- Locking Handle with 2 keys (accepts padlock, not included)
- 2 Adjustable Shelves
- Yellow

SLIMLINE STAND-ALONE



52142FY

W: 23.25
H: 65
D: 18

- 22-Gallon
- Self-Closing Door
- Locking Handle with 2 keys (accepts padlock, not included)
- 3 Adjustable Shelves
- Yellow

FLAMMABLE LIQUID

Before purchasing any flammable liquid storage cabinet, familiarize yourself with all local and state codes from the appropriate agencies having jurisdiction in your area.

**UNDER-COUNTER/
STAND-ALONE**



52130FY

W: 23.25
H: 35
D: 18

- 12-Gallon
- Self-Closing Door
- Locking Handle with 2 keys (accepts padlock, not included)
- 1 Adjustable Shelf
- Yellow

**UNDER-COUNTER/
STAND-ALONE**



52134FY

W: 35
H: 35
D: 22

- 22-Gallon
- Self-Closing Doors
- Locking Handle with 2 keys (accepts padlock, not included)
- 1 Adjustable Shelf
- Yellow

COUNTERTOP



52139FY

W: 17
H: 22
D: 17

- 4-Gallon
- Manual Door
- Locking Handle with 2 keys (accepts padlock, not included)
- 1 Adjustable Shelf
- Yellow

CORROSIVES

Before purchasing any chemical storage cabinet, familiarize yourself with all local and state codes from the appropriate agencies having jurisdiction in your area.

STAND-ALONE



52121AB

W: 43
H: 44
D: 18

- 30-Gallon
- Manual Doors
- Locking Handle with 2 keys (accepts padlock, not included)
- 1 Adjustable Shelf
- Blue

STAND-ALONE



52125AB

W: 43
H: 65
D: 18

- 45-Gallon
- Manual Doors
- Locking Handle with 2 keys (accepts padlock, not included)
- 2 Adjustable Shelves
- Blue

SLIMLINE STAND-ALONE



52141AB

W: 23.25
H: 65
D: 18

- 22-Gallon
- Manual Door
- Locking Handle with 2 keys (accepts padlock, not included)
- 3 Adjustable Shelves
- Blue

CORROSIVES

Before purchasing any chemical storage cabinet, familiarize yourself with all local and state codes from the appropriate agencies having jurisdiction in your area.

**UNDER-COUNTER/
STAND-ALONE**



52133AB

W: 35
H: 35
D: 22

- 22-Gallon
- Manual Doors
- Locking Handle with 2 keys (accepts padlock, not included)
- 1 Adjustable Shelf
- Blue

**UNDER-COUNTER/
STAND-ALONE**



52129AB

W: 23.25
H: 35
D: 18

- 12-Gallon
- Manual Door
- Locking Handle with 2 keys (accepts padlock, not included)
- 1 Adjustable Shelf
- Blue

COUNTERTOP



52139AB

W: 17
H: 22
D: 17

- 4-Gallon
- Manual Door
- Locking Handle with 2 keys (accepts padlock, not included)
- 1 Adjustable Shelf
- Blue

ACID

Before purchasing any chemical storage cabinet, familiarize yourself with all local and state codes from the appropriate agencies having jurisdiction in your area.

**CHEMCOR® LINED
STAND-ALONE**



52151AB

W: 43
H: 44
D: 18

- 30-Gallon
- Nonporous Interior Thermoplastic Coating
- Manual Doors
- Locking Handle with 2 keys (accepts padlock, not included)
- 1 Adjustable Shelf
- Blue

**CHEMCOR® LINED
STAND-ALONE**



52155AB

W: 43
H: 65
D: 18

- 45-Gallon
- Nonporous Interior Thermoplastic Coating
- Manual Doors
- Locking Handle with 2 keys (accepts padlock, not included)
- 2 Adjustable Shelves
- Blue

**CHEMCOR® LINED
SLIMLINE STAND-ALONE**



52171AB

W: 23.25
H: 65
D: 18

- 22-Gallon
- Nonporous Interior Thermoplastic Coating
- Manual Door
- Locking Handle with 2 keys (accepts padlock, not included)
- 3 Adjustable Shelves
- Blue

ACID

Before purchasing any chemical storage cabinet, familiarize yourself with all local and state codes from the appropriate agencies having jurisdiction in your area.

**CHEMCOR® LINED
UNDER-COUNTER/
STAND-ALONE**



52159AB

W: 35
H: 35
D: 22

- 22-Gallon
- Nonporous Interior Thermoplastic Coating
- Manual Doors
- Locking Handle with 2 keys (accepts padlock, not included)
- 1 Adjustable Shelf
- Blue

**CHEMCOR® LINED
UNDER-COUNTER/
STAND-ALONE**



52163AB

W: 23.25
H: 35
D: 18

- 12-Gallon
- Nonporous Interior Thermoplastic Coating
- Manual Door
- Locking Handle with 2 keys (accepts padlock, not included)
- 1 Adjustable Shelf
- Blue

**CHEMCOR® LINED
COURTERTOP**



52169AB

W: 17
H: 22
D: 17

- 4-Gallon
- Nonporous Interior Thermoplastic Coating
- Manual Door
- Locking Handle with 2 keys (accepts padlock, not included)
- 1 Adjustable Shelf
- Blue

ACID

Before purchasing any chemical storage cabinet, familiarize yourself with all local and state codes from the appropriate agencies having jurisdiction in your area.

**POLYETHYLENE
COUNTERTOP**



52143

W: 14.25
H: 19.75
D: 17.125

- (2) 4-Liter-Bottle Capacity
- Metal-Free Polyethylene Cabinet
- 2 Poly Spill Trays
- Manual Hinged Door (accepts padlock, not included)
- Blue

**WOOD LAMINATE
UNDER-COUNTER/
STAND-ALONE**



52145

W: 35.75
H: 36
D: 22

- (36) 2-1/2-Liter-Bottle Capacity
- Wood Construction with Stainless Steel Hardware
- Locking Doors with 2 Keys
- Adjustable Leg Levelers
- 1 Adjustable Shelf
- Blue

FLAMMABLES / CORROSIVES

Before purchasing any flammable liquid or chemical storage cabinet, familiarize yourself with all local and state codes from the appropriate agencies having jurisdiction in your area.

FLAMMABLES CABINETS



SC7133

SC7023

- Constructed of 1" multi-ply, exterior-grade plywood.
- Meets all applicable OSHA and NFPA #30 standards for the storage of flammable liquids.
- Cabinet floor constructed as a 2" liquid-tight trough.
- Self-Closing Door
- Internal Metal Lock with 2 Keys
- Yellow

SC7023

W: 23.875
H: 36.625
D: 23.875

- 30 Gallon
- 1 Adjustable Shelf

SC7133

W: 43
H: 44.625
D: 18

- 54 Gallon
- 2 Adjustable Shelves

BENCH FLAMMABLES CABINET



SC8023

W: 16.75
H: 21.25
D: 15.75

- 6 x 1 Gallon Capacity
- Constructed of 1" multi-ply, exterior-grade plywood
- Meets all applicable OSHA and NFPA #30 standards for the storage of flammable liquids
- Convenient and safe storage of small quantities on the laboratory bench
- Cabinet floor constructed as a 2" liquid-tight trough
- One fully-adjustable shelf
- Self-Closing Door
- Internal Metal Lock with 2 Keys
- Yellow

BENCH CORROSIVES CABINET



SC8063

W: 16.75
H: 21.25
D: 15.75

- 5 x 2.5 Liter or 16 x 500mL Capacity
- All-wood construction—no metal—no rust or corrosion
- Constructed of 1" multi-ply, exterior-grade plywood
- Sized for convenient storage of corrosive chemicals on the laboratory bench
- Painted with multiple coats of chemical-resistant paint
- Cabinet floor constructed as a 2" liquid-tight trough
- Blue

FLAMMABLE LIQUID / CORROSIVES

Before purchasing any flammable liquid or chemical storage cabinet, familiarize yourself with all local and state codes from the appropriate agencies having jurisdiction in your area.

STAK-A-CAB SAFETY STORAGE CABINETS



SC1460, SC2063, SC1863 (Cabinets)
SC1861 (Stand)

- Constructed of 1" thick, multi-ply, exterior-grade plywood.
- Finished with easily identified chemical-resistant paint.
- Organize all lab chemicals in a space no larger than a standard cabinet.
- Individual cabinets may be used as a stand-alone unit for the laboratory bench.
- Design as a stand-alone or stack up to two units high.
- All cabinets constructed to meet and exceed all applicable NFPA and OSHA standards.
- All cabinets have a liquid-tight, 2" trough to contain accidental spills.
- Doors: Self closing on flammable units. Manual closing on acid/corrosive units.
- Locks: Internal Metal Lock with 2 Keys on flammable unit; Acid/corrosive supplied with plastic hasp and padlock.
- No shelves

W: 47
H: 18
D: 18

Model #	Description	Capacity
SC1360	Acid Cabinet (Blue)	22 x 2.5 Liter
SC1460	Corrosives Cabinet (Blue)	22 x 2.5 Liter
SC1863	Flammables Cabinet (Yellow)	20 x 1 Gallon
SC2063	Corrosive/Flammable Combo (Gray)	Flammable: 10 x 1 Gallon Corrosive: 10 x 2.5 Liter

STAK-A-CAB STANDS

- Allows for the safe stacking of the Stak-A-Cabs up to 3 units high
- Allows easier and safer access when cabinet is placed on the floor
- Four built-in leveling feet

W: 46.5
H: 4.625
D: 17.75

Model #	Description
SC1461	Acid or Corrosives Stand (Blue)
SC1861	Flammables Stand (Yellow)
SC2061	Corrosive/Flammables Combo Stand (Gray)

JUMBO STACKING CABINETS



SC8082 (Corrosive Cabinet)
SC8079 (Flammable Cabinet)

- Constructed of 1" thick, multi-ply, exterior-grade plywood.
- Finished with easily identified chemical-resistant paint.
- Organize both flammable and corrosive liquids in a space no larger than a standard cabinet.
- Individual cabinets may be placed under the work surface.
- Design as a stand-alone or stack up to two units high.
- All cabinets meet or exceed all applicable OSHA and NFPA standards.
- All cabinets have a liquid-tight, 2" trough to contain accidental spills.
- Doors: Self closing on flammable units. Manual closing on acid/corrosive units.
- Locks: Internal Metal Lock with 2 Keys on flammable unit; Acid/corrosive supplied with plastic hasp and padlock.
- Shelves: 1 adjustable in flammable unit; 1 fixed in acid/corrosive units.

W: 30
H: 32.5
D: 18.5

Model #	Description
SC8079	Flammables Cabinet (Yellow)
SC8081	Acid Cabinet (Blue)
SC8082	Corrosives Cabinet (Gray)

FLAMMABLE LIQUID / ACID / CORROSIVES

Before purchasing any flammable liquid or chemical storage cabinet, familiarize yourself with all local and state codes from the appropriate agencies having jurisdiction in your area.

COMBINATION ACID/ FLAMMABLES CABINETS



- Constructed of 1" thick, multi-ply, exterior-grade plywood (Gray).
- Finished with easily identified chemical-resistant paint.
- Meets all applicable OSHA and NFPA standards.
- Cabinets have a liquid-tight 2" trough to contain accidental spills.
- Combo cabinets made to fit under Laboratory Casework or as stand alone units.

SC2037

W: 35
H: 35.5
D: 22

ACID/CORROSIVE SIDE:

- Wooden hinge assembly.
- Polypropylene hasp assembly.
- 10" corrosive label for easy identification.
- Manual door
- 18 x 2.5 Liter Capacity

FLAMMABLES SIDE:

- Continuous metal hinge.
- Metal locking assembly.
- Adjustable shelf.
- 10" flammable label for easy identification.
- Self closing door
- 16 x 1 Gallon Capacity

ACID CABINETS



- Constructed of 1" thick, high density, multi-ply plywood (Blue).
- Finished with multiple coats of chemical-resistant paint.
- Cabinets have a liquid-tight 2" trough to contain accidental spills.
- Fasteners used are plastic—even the few screws used are nylon.
- Wooden door handle.
- Word "ACID" printed in 6" red letters.
- 4 leveling feet included.
- Top recessed to include a liquid-tight polypropylene tray. Use this top tray as a dispensing area.

SC8051

W: 31
H: 36.625
D: 22

- Fully Lined
- 30 x 2.5 Liter or 90 x 500mL Capacity

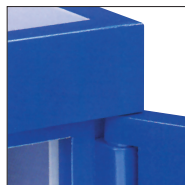
SC8041

W: 31
H: 36.625
D: 22

- Partially Lined (Horizontal Surfaces Only)
- 30 x 2.5 Liter or 90 x 500mL Capacity



ACID CABINET CONSTRUCTION



Unique, entirely wooden hinge assembly eliminates common problem of hinge deterioration.



Unique polypropylene lock assembly. Padlock and two keys furnished with cabinet.



Top recessed to include a liquid-tight polypropylene tray. Tray will hold 11 liters (3 gallons) of spilled liquid. Use this top tray as a dispensing area.



Cabinet floor constructed as a 2" liquid-tight trough to contain spillage.

GERMICIDAL CABINET



52192

W: 26.25
H: 28.5
D: 10.25

For sanitizing and storage of safety glasses or goggles. Holds 40 goggles. Cycle controlled by timer. Pilot light confirms UV lamp in use. Shuts off automatically if double doors are open. Doors interlocked with tamper-resistant latches. Wall- or shelf-mountable with 7' grounded electrical cord. 24-gauge white enameled lockable steel cabinet. Germicidal lamp. No assembly required.

Goggles/Glasses not included

ADVANTAGE GOOGLES



52195

UV-absorbing polycarbonate lens. Tinted flexible body. Adjustable headband. Indirect vent. Fits over most prescription eyewear. Replaceable lens. Meets ANSI Z87.1-2003 Standards.

1 Pack of 40 goggles

SPILL CONTROL STATION



52186

W: 15
H: 30.75
D: 11.5

For easy clean-up of emergency spills. Universal spill control pillows absorb and contain all types of acid, caustic, solvent or oil. Special pillows for hydrofluoric acid.

Includes:

- 10 standard spill pillows
- 15 sorbent pads
- 2 pairs of gloves
- 15 hazardous waste bags and ties
- 2 hydrofluoric spill pillows
- 2 Total Body Saranex "Tyvek" coveralls
- 2 chemical splash goggles

FIRE BLANKET IN CABINET



52188

W: 16.5
H: 13.5
D: 5.5

Fire-retardant 62"x84" wool blanket. Useful for general first aid and other emergencies. Heavy 22-gauge red steel cabinet with drop down door. Colorful "Stop, Drop and Roll" technique graphics.

FIRST AID KIT



First Aid Kit is designed to meet OSHA and ANSI first aid requirements. Durable, steel box has a built-in handle and is wall mountable.

52189 25 Person Kit

52190 50 Person Kit

KEY CABINET



52191

W: 13
H: 17
D: 3

120 Key cabinet with 4 wheel combo lock. Heavy duty 22-gauge welded steel.