

|   |    |
|---|----|
| GEN II<br>VERTICAL SASH                       | 2  |
| DEMONSTRATION GEN II<br>FRONT/REAR SASH       | 3  |
| GEN II<br>COMBINATION SASH                    | 4  |
| STUDENT WORKSTATION GEN II<br>4-SIDED VIEWING | 5  |
| STUDENT WORKSTATION GEN II<br>3-SIDED VIEWING | 6  |
| BASIC GEN II<br>BY-PASS                       | 7  |
| BASE CABINETS                                 | 8  |
| CEILING ENCLOSURES                            | 11 |
| DUCTLESS HOODS                                | 13 |
| SPECIFICATIONS                                | 14 |

REV. 03/24

©2023 STEVENS INDUSTRIES, INC.  
ALL RIGHTS RESERVED.  
Due to continuing product  
development, Stevens reserves  
the right to change specifications  
without notice.

# GEN II



## 51830 STYLE

Junior High / High School / University Level  
Biology / Chemistry

3 models available: 48"W: **51830-48**  
60"W: **51830-60**  
72"W: **51830-72** (Custom Order)

Hood incorporates both by-pass and airfoil with retainer spill trough to protect wheelchair users. Remote lever control fixtures are positioned forward and lower compliant with ADA specifications. Top is 1 1/4" black epoxy with 1/4" dished area.

The GEN II design has contour form vertical side posts and slope back header with radius lower horizontal edge and polyresin liner. Design promotes smooth airflow into hood opening. Hood fascia has 36" high clear sight view. Full opening 28" sash ideal for unrestricted equipment setup access. Advantage Scientific hood includes standard 18" vertical push button sash stop to promote efficient working extraction and face velocity.

### STANDARD EQUIPMENT

- Digital Airflow Monitor (See Specification page for details)
- GFCI Duplex
- GFCI/Light Switch Combo
- Blower Switch
- Cup Sink in forward right position
- Remote Cold Water Faucet
- Remote Gas Fixture
- Push Button Sash Stop
- Lever Handles

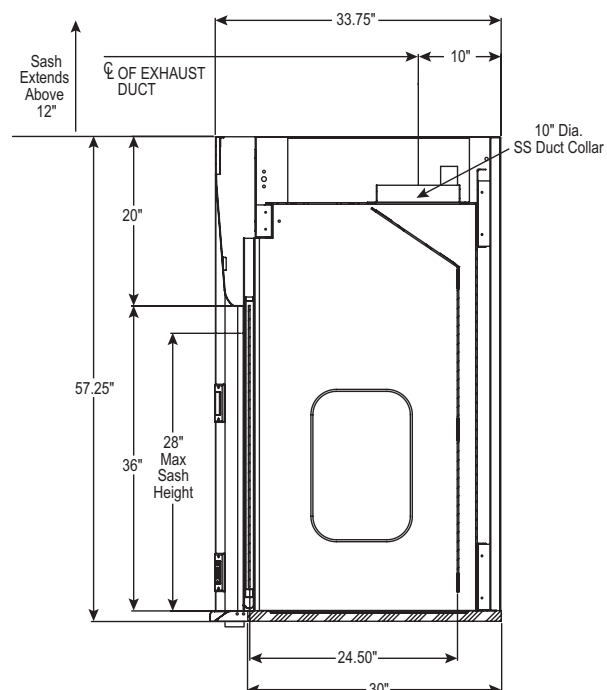
|          | 18" Sash Height                 |                                | 28" Sash Height                 |                                |
|----------|---------------------------------|--------------------------------|---------------------------------|--------------------------------|
|          | CFM @ 100 FPM / Static Pressure | CFM @ 60 FPM / Static Pressure | CFM @ 100 FPM / Static Pressure | CFM @ 60 FPM / Static Pressure |
| 51830-48 | 475 / 0.10                      | 285 / 0.04                     | 739 / 0.26                      | 433 / 0.09                     |
| 51830-60 | 625 / 0.12                      | 375 / 0.05                     | 972 / 0.32                      | 583 / 0.12                     |
| 51830-72 | 775 / 0.16                      | 465 / 0.06                     | 1206 / 0.41                     | 723 / 0.15                     |

### CONSTRUCTION FEATURES

- Designed for CV or VAV HVAC Systems
- Optimal Interior Working Depth
- Chain and Sprocket Shaft Drive Sash
- 10" Round AA Duct Collar
- Full Frame Construction
- Powder Coated Petal White Finish
- UL 1805 Listed
- LED Lights
- Full-length Finger Lift
- Knock Down Ready
- 60-100 FPM

### OPTIONAL ACCESSORIES

- 52001 Ceiling Enclosure
  - Fume Hood Base Units
- See Specification page base unit configurations



## GEN II



### 51820 STYLE

Junior High / High School / University Level  
Biology / Chemistry

3 models available: 48"W: **51820-48**  
60"W: **51820-60**  
72"W: **51820-72** (Custom Order)

Demonstration Hood has front and rear access vertical sashes ideal for rear see-thru viewing, experiment participation or in-wall installation. Sashes have interlock, preventing simultaneous opening of both sashes. Provided with rear sash lock to secure prep area. Incorporates both by-pass and airfoil with retainer spill trough to protect wheelchair users. Remote lever control fixtures are positioned forward and lower compliant with ADA specifications. Top is 1 1/4" black epoxy with 1/4" dished area.

The GEN II design has contour form vertical side posts and slope back header with radius lower horizontal edge and polyresin liner. Design promotes smooth airflow into hood opening. Hood fascia has 36" high clear sight view. Full opening 28" sash ideal for unrestricted equipment setup access. Advantage Scientific hood includes standard 18" vertical push button sash stop to promote efficient working extraction and face velocity.

#### STANDARD EQUIPMENT

- Digital Airflow Monitor (See Specification page for details)
- GFCI Duplex
- GFCI/Light Switch Combo
- Blower Switch
- Cup Sink in center right position
- Remote Cold Water Faucet
- Remote Gas Fixture
- Push Button Sash Stop
- Lever Handles

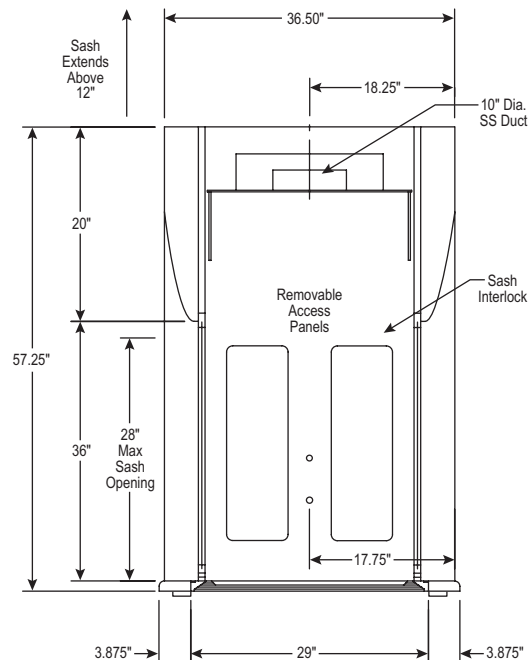
| Part Number | 18" Sash Height                 |                                | 28" Sash Height                 |                                |
|-------------|---------------------------------|--------------------------------|---------------------------------|--------------------------------|
|             | CFM @ 100 FPM / Static Pressure | CFM @ 60 FPM / Static Pressure | CFM @ 100 FPM / Static Pressure | CFM @ 60 FPM / Static Pressure |
| 51820-48    | 475 / 0.10                      | 285 / 0.04                     | 739 / 0.26                      | 433 / 0.09                     |
| 51820-60    | 625 / 0.12                      | 375 / 0.05                     | 972 / 0.32                      | 583 / 0.12                     |
| 51820-72    | 775 / 0.16                      | 465 / 0.06                     | 1206 / 0.41                     | 723 / 0.15                     |

#### CONSTRUCTION FEATURES

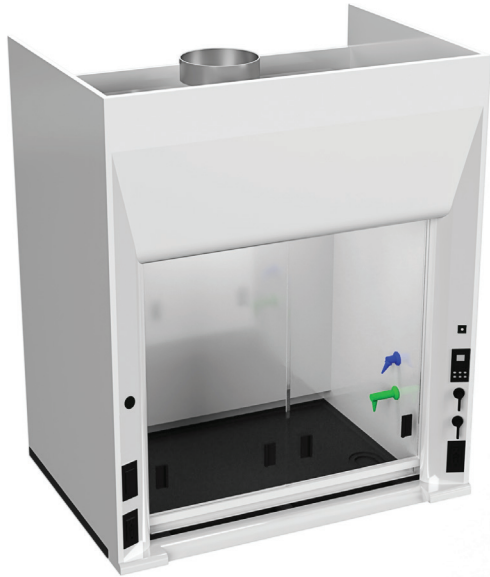
- Designed for CV or VAV HVAC Systems
- Optimal Interior Working Depth
- Chain and Sprocket Shaft Drive Sash
- 10" Round AA Duct Collar
- Full Frame Construction
- Powder Coated Petal White Finish
- UL 1805 Listed
- LED Lights
- Full-length Finger Lift
- Knock Down Ready
- 60-100 FPM

#### OPTIONAL ACCESSORIES

- 52002 Ceiling Enclosure
- Fume Hood Base Units  
See Specification page base unit configurations



# GEN II



Junior High / High School / University Level  
Biology / Chemistry

## 51835 STYLE

2 models available: 60"W: **51835-60** (Custom Order) **2 Sliding Doors**

72"W: **51835-72** (Custom Order) **4 Sliding Doors**

Hood incorporates both by-pass and airfoil with retainer spill trough to protect wheelchair users. Remote lever control fixtures are positioned forward and lower compliant with ADA specifications. Top is 1 1/4" black epoxy with 1/4" dished area. Combination sash allows vertical sash to be down while sliding door panels are opened for access reducing open exposure to hood interior.

The GEN II design has contour form vertical side posts and slope back header with radius lower horizontal edge and polyresin liner. Design promotes smooth airflow into hood opening. Hood fascia has 36" high clear sight view. Full opening 28" sash ideal for unrestricted equipment setup access. Advantage Scientific hood includes standard 18" vertical push button sash stop to promote efficient working extraction and face velocity.

### STANDARD EQUIPMENT

- Digital Airflow Monitor (See Specification page for details)
- GFCI Duplex
- GFCI/Light Switch Combo
- Blower Switch
- Cup Sink in forward right position
- Remote Cold Water Faucet
- Remote Gas Fixture
- Push Button Sash Stop
- Lever Handles

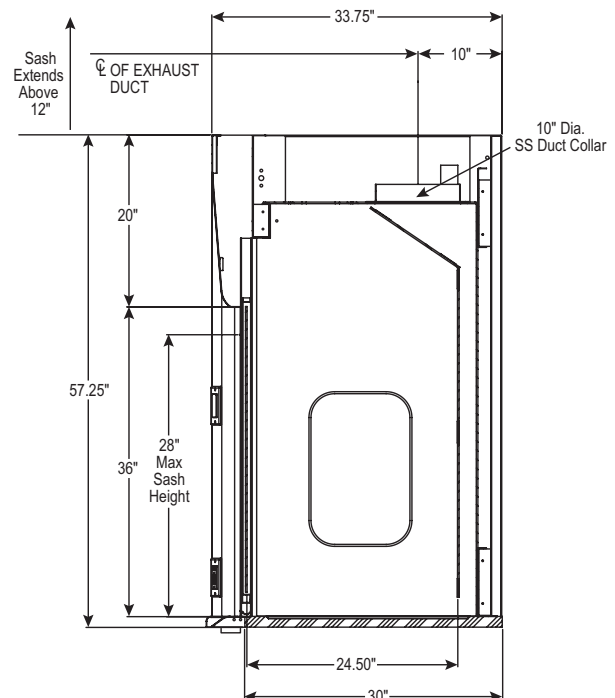
| Part Number | 18" Sash Height                 |                                | 28" Sash Height                 |                                |
|-------------|---------------------------------|--------------------------------|---------------------------------|--------------------------------|
|             | CFM @ 100 FPM / Static Pressure | CFM @ 60 FPM / Static Pressure | CFM @ 100 FPM / Static Pressure | CFM @ 60 FPM / Static Pressure |
| 51835-60    | 625 / 0.12                      | 375 / 0.05                     | 972 / 0.32                      | 583 / 0.12                     |
| 51835-72    | 775 / 0.16                      | 465 / 0.06                     | 1206 / 0.41                     | 723 / 0.15                     |

### CONSTRUCTION FEATURES

- Optimal Interior Working Depth
- Chain and Sprocket Shaft Drive Sash
- 10" Round AA Duct Collar
- Full Frame Construction
- Powder Coated Petal White Finish
- UL 1805 Listed
- LED Lights
- Full-length Finger Lift
- Knock Down Ready
- 60-100 FPM

### OPTIONAL ACCESSORIES

- 52001 Ceiling Enclosure
- Fume Hood Base Units  
See Specification page base unit configurations



## GEN II



### 51840 STYLE

Junior High / High School / University Level  
Biology / Chemistry

2 models available: 48"W: **51840-48** (Custom Order)

60"W: **51840-60** (Custom Order)

Workstation Hood is designed for front face vertical sash operation and 4 sided viewing. Hood incorporates both by-pass and airfoil with retainer spill trough to protect wheelchair users. Remote lever control fixtures are positioned forward and lower compliant with ADA specifications. Top is 1 1/4" black epoxy with 1/4" dished area.

The GEN II design has contour form vertical side posts and Polyresin liner. Design promotes smooth airflow into hood opening. Hood fascia has 42" high clear sight view. Full opening 28" sash ideal for unrestricted equipment setup access. Advantage Scientific hood includes standard 18" vertical push button sash stop to promote efficient working extraction and face velocity. Blower and airflow balancing required by HVAC contractor.

#### STANDARD EQUIPMENT

- Digital Airflow Monitor (See Specification page for details)
- GFCI Duplex
- GFCI/Light Switch Combo
- Blower Switch
- Cup Sink in forward right position
- Remote Cold Water Faucet
- Remote Gas Fixture
- Push Button Sash Stop
- Lever Handles

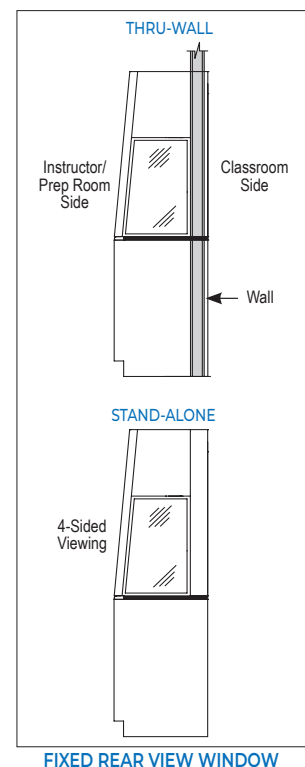
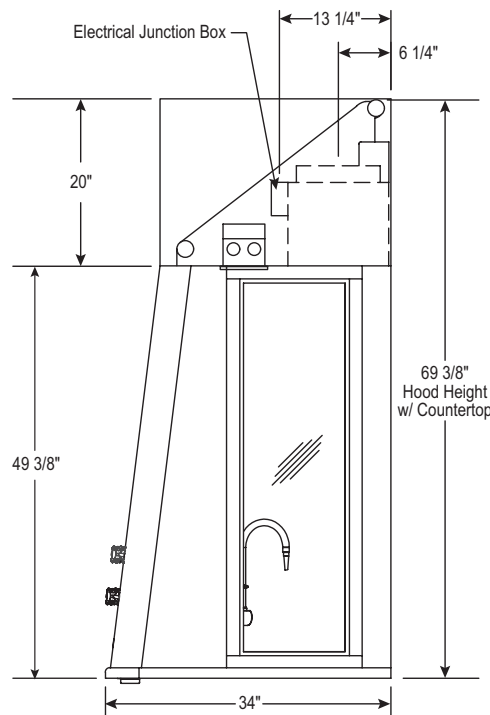
| Part Number | 18" Sash Height                 |                                | 28" Sash Height                 |                                |
|-------------|---------------------------------|--------------------------------|---------------------------------|--------------------------------|
|             | CFM @ 100 FPM / Static Pressure | CFM @ 60 FPM / Static Pressure | CFM @ 100 FPM / Static Pressure | CFM @ 60 FPM / Static Pressure |
| 51840-48    | 475 / 0.09                      | 285 / 0.03                     | 770 / 0.24                      | 433 / 0.07                     |
| 51840-60    | 625 / 0.11                      | 375 / 0.04                     | 1000 / 0.30                     | 583 / 0.10                     |

#### CONSTRUCTION FEATURES

- Optimal Interior Working Depth
- Chain and Sprocket Shaft Drive Sash
- 10" Round AA Duct Collar
- Full Frame Construction
- Powder Coated Petal White Finish
- UL 1805 Listed
- LED Lights
- Full-length Finger Lift
- Knock Down Ready
- 60-100 FPM

#### OPTIONAL ACCESSORIES

- 52002 Workstation Ceiling Enclosure
  - Fume Hood Base Units
- See Specification page base unit configurations



## GEN II



### 51850 STYLE

Junior High / High School / University Level  
Biology / Chemistry

2 models available: 48"W: **51850-48** (Custom Order)

60"W: **51850-60** (Custom Order)

Workstation Hood is designed for front face vertical sash operation and 3 sided viewing. Hood incorporates both by-pass and airfoil with retainer spill trough to protect wheelchair users. Remote lever control fixtures are positioned forward and lower compliant with ADA specifications. Top is 1 1/4" black epoxy with 1/4" dished area.

The GEN II design has contour form vertical side posts and polyresin liner. Design promotes smooth airflow into hood opening. Hood fascia has 42" high clear sight view. Full opening 28" sash ideal for unrestricted equipment setup access. Advantage Scientific hood includes standard 18" vertical push button sash stop to promote efficient working extraction and face velocity. Blower and airflow balancing required by HVAC contractor.

#### STANDARD EQUIPMENT

- Digital Airflow Monitor (See Specification page for details)
- GFCI Duplex
- GFCI/Light Switch Combo
- Blower Switch
- Cup Sink in forward right position
- Remote Cold Water Faucet
- Remote Gas Fixture
- Push Button Sash Stop
- Lever Handles

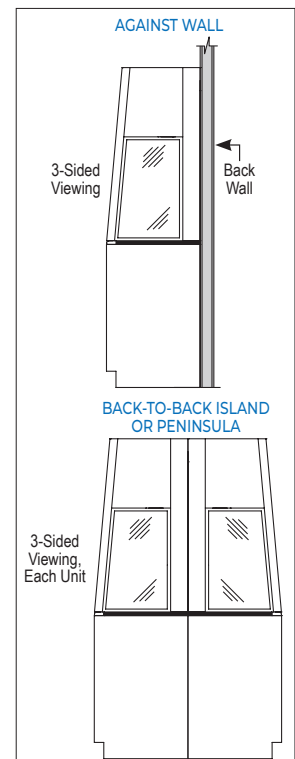
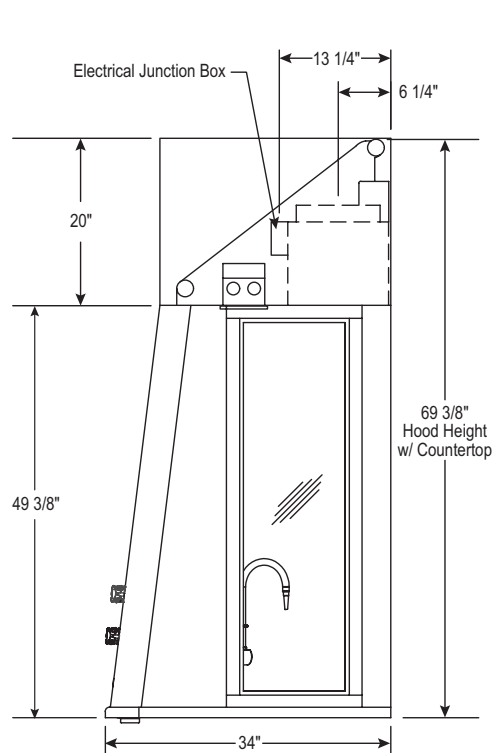
| Part Number | 18" Sash Height                 |                                | 28" Sash Height                 |                                |
|-------------|---------------------------------|--------------------------------|---------------------------------|--------------------------------|
|             | CFM @ 100 FPM / Static Pressure | CFM @ 60 FPM / Static Pressure | CFM @ 100 FPM / Static Pressure | CFM @ 60 FPM / Static Pressure |
| 51850-48    | 475 / 0.09                      | 285 / 0.03                     | 770 / 0.24                      | 433 / 0.07                     |
| 51850-60    | 625 / 0.11                      | 375 / 0.04                     | 1000 / 0.30                     | 583 / 0.10                     |

#### CONSTRUCTION FEATURES

- Optimal Interior Working Depth
- Chain and Sprocket Shaft Drive Sash
- 10" Round AA Duct Collar
- Full Frame Construction
- Powder Coated Petal White Finish
- UL 1805 Listed
- LED Lights
- Full-length Finger Lift
- Knock Down Ready
- 60-100 FPM

#### OPTIONAL ACCESSORIES

- 52002 Workstation Ceiling Enclosure
  - Fume Hood Base Units
- See Specification page base unit configurations





## GEN II



### 51800 STYLE

Junior High / High School / University Level  
Biology / Chemistry

1 model available: 48"W: **51800-48**

By-pass fume hood. Value and performance in a solid design. Mounted on a phenolic top. Unit has a 28" high opening sash and is equipped with a light switch, blower switch and 2 GFCI outlets..

#### STANDARD EQUIPMENT

- 2 GFI duplex
- Blower switch
- Light switch

| Part Number | CFM @ 18" | CFM @ 29" | SP  |
|-------------|-----------|-----------|-----|
| 51800-48    | 833       | 521       | .25 |

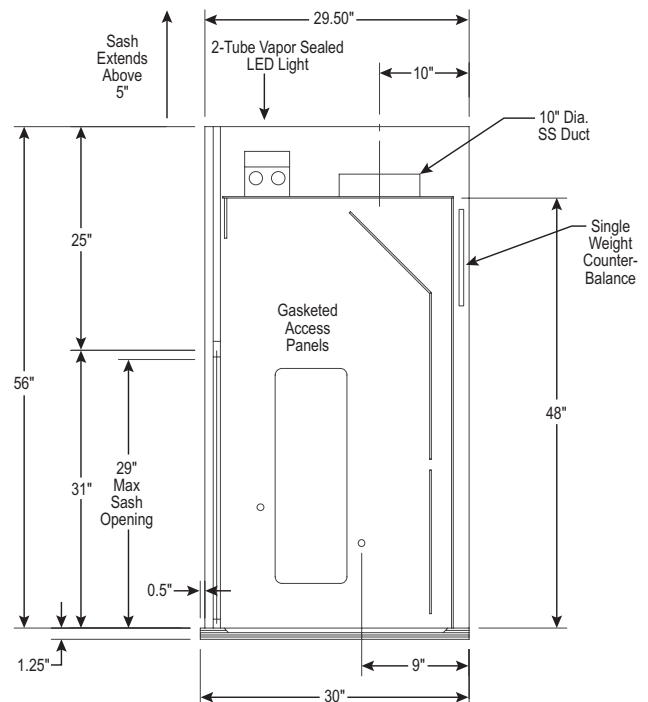
#### CONSTRUCTION FEATURES

- Galvanized Frame Construction
- Powder Coat Exterior Finishes In Petal White
- Polyresin Liner
- Led Light Fixture
- Full Width Finger Lift Sash
- 10" Exhaust Duct Collar

#### OPTIONAL ACCESSORY

- Fume Hood Base  
See Specification page base unit configurations

Ceiling Enclosures Not Available

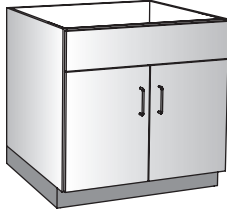


**SINGLE-SIDED & 3-VIEW WORKSTATIONS**

**DOUBLE-SIDED DEMO & 4-VIEW WORKSTATIONS**

LAMINATE

**STANDING/ADA HEIGHT  
BASE CABINET**

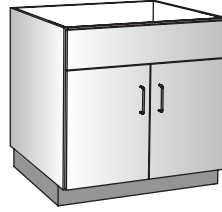


**41000**

W : 36  
H : 32, 35  
D : 29

- Cabinet Options Defined by Series
- Plain Apron
- Doors
- Removable Back

**STANDING/ADA HEIGHT  
BASE CABINET**

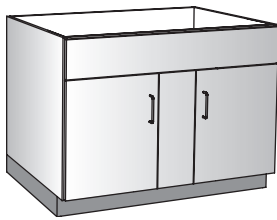


**41001**

W : 36  
H : 32, 35  
D : 28

- Cabinet Options Defined by Series
- Plain Apron
- Doors
- Finished Back
- Front and Rear Toe Kicks

**STANDING/ADA HEIGHT  
BASE CABINET**

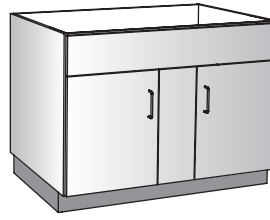


**41002**

W : 48, 60  
H : 32, 35  
D : 29

- Cabinet Options Defined by Series
- Plain Apron
- Doors
- Removable Back

**STANDING/ADA HEIGHT  
BASE CABINET**



**41003**

W : 48, 60  
H : 32, 35  
D : 28

- Cabinet Options Defined by Series
- Plain Apron
- Doors
- Finished Back
- Front and Rear Toe Kicks

METAL

**ADA HEIGHT  
BASE CABINET**



**51930**

51930-4832 W: 48  
H: 32  
D: 29

51930-6032 W: 60  
H: 32  
D: 29

- Powder Coated Steel Construction
- Right Hand Chase
- Open Design Allows Wheelchair Access

**ADA HEIGHT  
BASE CABINET**



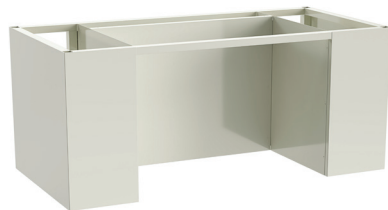
**51950**

51950-4832 W: 48  
H: 32  
D: 27

51950-6032 W: 60  
H: 32  
D: 27

- Powder Coated Steel Construction
- Right Hand Chase
- Finished Back
- Open Design Allows Wheelchair Access

**ADA HEIGHT  
BASE CABINET**

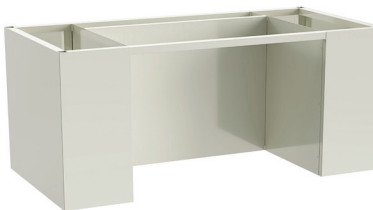


**51932**

51932-7232 W: 72  
H: 32  
D: 29

- Powder Coated Steel Construction
- Left and Right Hand Chases
- Open Design Allows Wheelchair Access

**ADA HEIGHT  
BASE CABINET**



**51952**

51952-7232 W: 72  
H: 32  
D: 27

- Powder Coated Steel Construction
- Left and Right Hand Chases
- Finished Back
- Open Design Allows Wheelchair Access



## STANDING / ADA HEIGHT BASE CABINET



### 51900

|            |                         |
|------------|-------------------------|
| 51900-1232 | W: 12<br>H: 32<br>D: 22 |
| 51900-1235 | W: 12<br>H: 35<br>D: 22 |
| 51900-2432 | W: 24<br>H: 32<br>D: 22 |
| 51900-2435 | W: 24<br>H: 35<br>D: 22 |

- Powder Coated Steel Construction
- Right Hinge Door with Full Access Opening
- Open Back
- Adjustable Shelf

## STANDING / ADA HEIGHT BASE CABINET



### 51903

|            |                         |
|------------|-------------------------|
| 51903-3632 | W: 36<br>H: 32<br>D: 22 |
| 51903-3635 | W: 36<br>H: 35<br>D: 22 |
| 51903-4832 | W: 48<br>H: 32<br>D: 22 |
| 51903-4835 | W: 48<br>H: 35<br>D: 22 |

- Powder Coated Steel Construction
- Double Doors with Full Access Opening
- Open Back
- Adjustable Shelf

## ADA HEIGHT SINK BASE



### 51933

|            |                         |  |
|------------|-------------------------|--|
| 51933-3632 | W: 36<br>H: 32<br>D: 29 | • Powder Coated Steel Construction     |
| 51933-4832 | W: 48<br>H: 32<br>D: 29 | • No Chase                             |
|            |                         | • Open Design Allows Wheelchair Access |

## REAR FILLER

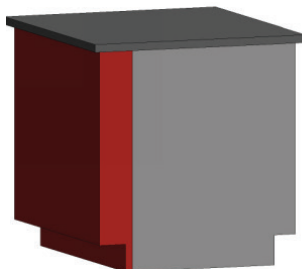


### REAR FILLER

Metal cabinets with exposed ends will require a Rear Filler. Rear filler size depends on type of fume hood and height of base cabinet under hood.

| Base Cabinet Height | Hood Type    |                            |
|---------------------|--------------|----------------------------|
|                     | Double Sided | Single Sided & Workstation |
| 32 H                | 519RF-0532   | 519RF-0732                 |
| 35 H                | 519RF-0535   | 519RF-0735                 |

## FINISHED BACK



### FINISHED BACK

Metal cabinets with exposed backs will require a Finished Back. Finished Back size depends on width of fume hood and height of base cabinet under hood.

| Hood Width | Base Cabinet Height | Finished Back |
|------------|---------------------|---------------|
| 48 Wide    | 32 H                | 519FB-4832    |
|            | 35 H                | 519FB-4835    |
| 60 Wide    | 32 H                | 519FB-6032    |
|            | 35 H                | 519FB-6035    |
| 72 Wide    | 32 H                | 519FB-7232    |
|            | 35 H                | 519FB-7235    |

**STANDING HEIGHT  
CORROSIVES BASE CABINET**



**51910**

51910-2432 W: 24  
H: 32  
D: 22

51910-2435 W: 24  
H: 35  
D: 22

- Vented Right Hinge Door
- Reinforced Steel with Hi-Tech Performance Polymer Alloy Coating Which Provides 100% Coverage Against Corrosion
- 3-Point Locking System
- Vent Kit Provided

**STANDING HEIGHT  
FLAMMABLES BASE CABINET**



**51920**

51920-2432 W: 24  
H: 32  
D: 22

51920-2435 W: 24  
H: 35  
D: 22

- Right Hinge Door
- 3-Point Locking System
- Certified to Meet NFPA 45

METAL

**STANDING HEIGHT  
CORROSIVES BASE CABINET**



**51912**

51912-3632 W: 36  
H: 32  
D: 22

51912-3635 W: 36  
H: 35  
D: 22

- Vented Double Doors
- Reinforced Steel with Hi-Tech Performance Polymer Alloy Coating Which Provides 100% Coverage Against Corrosion
- 3-Point Locking System
- Vent Kit Provided

**STANDING HEIGHT  
FLAMMABLES BASE CABINET**



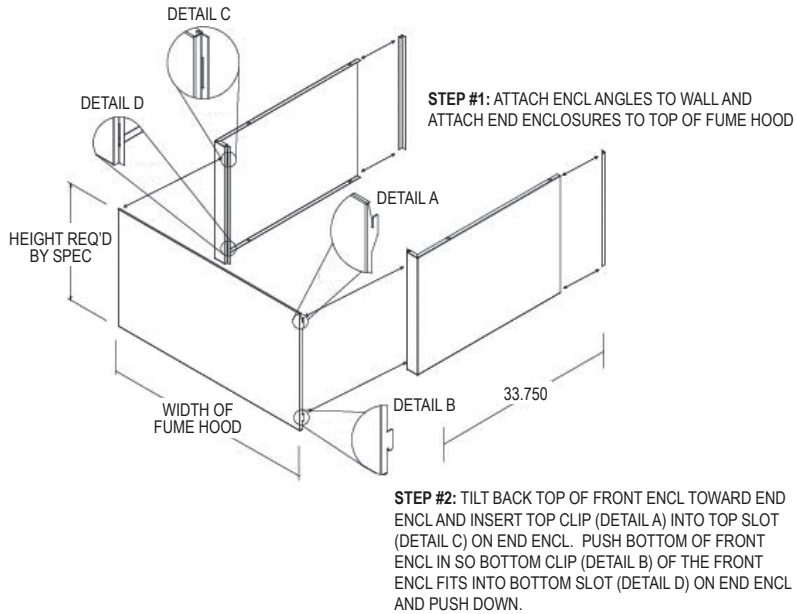
**51922**

51922-3632 W: 36  
H: 32  
D: 22

51922-3635 W: 36  
H: 35  
D: 22

- Double Doors
- 3-Point Locking System
- Certified to Meet NFPA 45

## SINGLE-SIDED CEILING ENCLOSURES



## 52001 SERIES CEILING ENCLOSURES

See Chart for Model Numbers  
And Sizes

W : 48, 60, 72

- 09H = for 9' Ceiling
- 10H = for 10' Ceiling

The 52001 Series Ceiling Enclosures provide a professional, finished design in any setting. Ceiling enclosures are fabricated of cold rolled steel and finished to match the fume hood superstructure. Ceiling enclosures extend from top of hood to ceiling height or soffit.

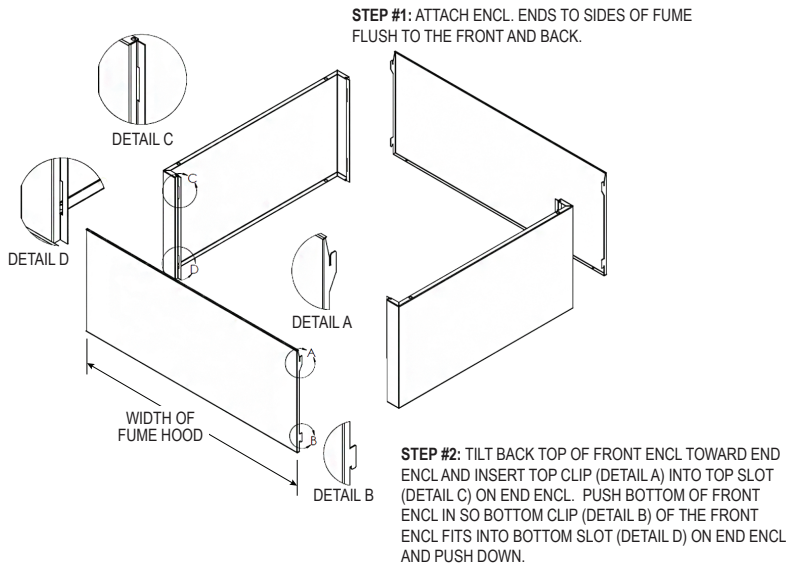
To specify, provide model number and size of enclosure.



**Model Numbers and Sizes for  
Single Sided Ceiling Enclosure**

|            |                  | Ceiling Height & Type |            |               |                |
|------------|------------------|-----------------------|------------|---------------|----------------|
| Hood Width | Base Cabinet Ht. | 9ft Hard              | 10ft Hard  | 9ft Suspended | 10ft Suspended |
| 48 Wide    | 32 High          | 52001-4817            | 52001-4829 | 52001-4817    | 52001-4829     |
| 48 Wide    | 35 High          | 52001-4814            | 52001-4826 | 52001-4817    | 52001-4829     |
| 60 Wide    | 32 High          | 52001-6017            | 52001-6029 | 52001-6017    | 52001-6029     |
| 60 Wide    | 35 High          | 52001-6014            | 52001-6026 | 52001-6017    | 52001-6029     |
| 72 Wide    | 32 High          | 52001-7217            | 52001-7229 | 52001-7217    | 52001-7229     |
| 72 Wide    | 35 High          | 52001-7214            | 52001-7226 | 52001-7217    | 52001-7229     |

## DOUBLE-SIDED CEILING ENCLOSURES



## 52002 SERIES CEILING ENCLOSURES

See Chart for Model Numbers  
And Sizes

W : 48, 60, 72

- 09H = for 9' Ceiling
- 10H = for 10' Ceiling

The 52002 Series Ceiling Enclosures provide a professional, finished design in any setting. Ceiling enclosures are fabricated of cold rolled steel and finished to match the fume hood superstructure. Ceiling enclosures extend from top of hood to ceiling height or soffit.

To specify, provide model number and size of enclosure.



**Model Numbers and Sizes for  
Double Sided Ceiling Enclosure**

| Hood Width | Base Cabinet Ht. | Ceiling Height & Type |            |               |                |
|------------|------------------|-----------------------|------------|---------------|----------------|
|            |                  | 9ft Hard              | 10ft Hard  | 9ft Suspended | 10ft Suspended |
| 48 Wide    | 32 High          | 52002-4817            | 52002-4829 | 52002-4817    | 52002-4829     |
| 48 Wide    | 35 High          | 52002-4814            | 52002-4826 | 52002-4817    | 52002-4829     |
| 60 Wide    | 32 High          | 52002-6017            | 52002-6029 | 52002-6017    | 52002-6029     |
| 60 Wide    | 35 High          | 52002-6014            | 52002-6026 | 52002-6017    | 52002-6029     |
| 72 Wide    | 32 High          | 52002-7217            | 52002-7229 | 52002-7217    | 52002-7229     |
| 72 Wide    | 35 High          | 52002-7214            | 52002-7226 | 52002-7217    | 52002-7229     |

**Model Numbers and Sizes for  
Workstation Ceiling Enclosure**

| Hood Width | Base Cabinet Ht. | Ceiling Height & Type |              |               |                |
|------------|------------------|-----------------------|--------------|---------------|----------------|
|            |                  | 9ft Hard              | 10ft Hard    | 9ft Suspended | 10ft Suspended |
| 48 Wide    | 32 High          | 52002-4807WS          | 52002-4819WS | 52002-4807WS  | 52002-4819WS   |
| 48 Wide    | 35 High          | 52002-4805WS          | 52002-4817WS | 52002-4807WS  | 52002-4819WS   |
| 60 Wide    | 32 High          | 52002-6007WS          | 52002-6019WS | 52002-6007WS  | 52002-6019WS   |
| 60 Wide    | 35 High          | 52002-6005WS          | 52002-6017WS | 52002-6007WS  | 52002-6019WS   |

## 36" Ductless Hood



### 52060

Order Filter Per  
Required Application

**52080**  
36" Hood Biology Filter

**52082**  
36" Hood Chemistry Filter

*See Specification page  
for more information*

## 36" Mobile Cart & Tray



### 52061

## 48" Ductless Hood



### 52070

Order Filter Per  
Required Application

**52081**  
48" Hood Biology Filter

**52083**  
48" Hood Chemistry Filter

## 48" Mobile Cart & Tray



### 52071

|                                  |   |
|----------------------------------|---|
| <b>Display Range</b>             | 0-999 fpm (0 - 5.0 m/s)   |
| <b>Alarm Range</b>               | 0-999 fpm (0 - 5.0 m/s)   |
| <b>Field Set-Up</b>              | 2-point velocity calibration ( with on-screen instructions )  |
| <b>Accuracy</b>                  | Sensor / Display Resolution 1 fpm / Face Velocity Accuracy +/-10%   |
| <b>Alarm Delays</b>              | User Configurable - 0 to 60 seconds   |
| <b>Relay Output</b>              | 4 ( 1 on board - 3 on optional plug in relay interface unit )   |
| <b>Analog Output</b>             | 0-10V Output, Directly proportional to velocity (Optional)  |
| <b>Relay Input</b>               | 3   |
| <b>Comm. Port</b>                | RS232 - Can be connected via Serial Interface to LAN network ( Full Software Available)   |
| <b>Sash High Indication</b>      | Yes, with separate plug-in connection   |
| <b>Night Setback</b>             | Yes   |
| <b>External Alarm Indication</b> | Yes   |
| <b>Power Requirement</b>         | Input-120VAC, 60Hz  |
| <b>Units</b>                     | Output-15VDC, 500ma   |
| <b>Display-Visual</b>            | English and Metric (user selectable)  |
| <b>Alarm Indication</b>          | Analog bar graph or Fault Timeline / LEDs: red, alarm; yellow, caution; green, normal / Digital display of velocity reading (can be turned off) |
| <b>Horn Silence</b>              | Yes (temporary / permanent / automatic depending on type of alarm or external input)  |
| <b>Mounting</b>                  | Semi Flush  |
| <b>Operating Temperature</b>     | 55-86 F ( 13-30 C )   |
| <b>Storage Temperature</b>       | -40-150 F ( -40-65 C )  |
| <b>Instrument Dimensions</b>     | Instrument Case: 5.2" H x 3.19" W x 1.14" D ( 132mm H x 81mm W x 29mm D )   |
| <b>Agency Listings</b>           | UL and CE   |

## DIGITAL AIRFLOW MONITOR



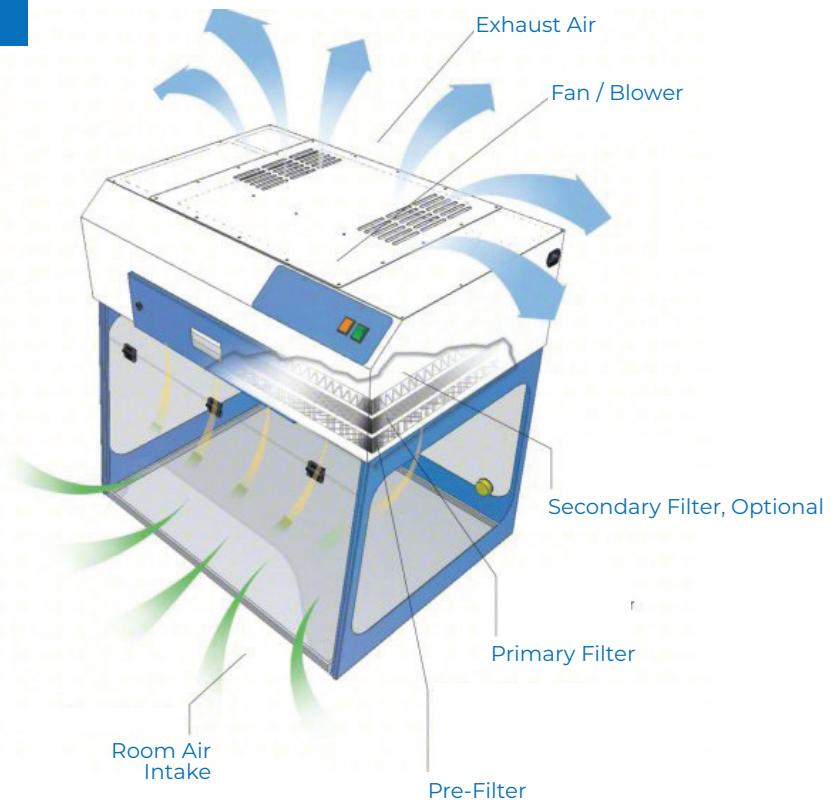


## AIRFLOW

Contaminated air is pulled through the Multiplex Filtration System. Activated carbon absorbs chemical vapors. Clean air is returned to the room.

The main filters are easy to replace with no tools required. The filter clamps tightly against the filter gasket to prevent filter bypass and maintain filter integrity.

The pre-filter may be replaced while unit is in operation.





### DESIGN FEATURES

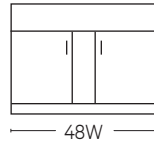
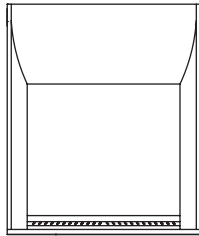
- A. Filter I.D. Window:** A convenient, strategically placed front cover window shows the installed filter part number and installation date to encourage timely filter replacement.
- B. Control Panel:** Electronic controls and displays include switches for the blower and filter blockage alarm.
- C. Filter Blockage Alarm:** Continuously monitors filter loading and alerts user when service is needed.
- D. Electrical:** 115V/60Hz
- E. Steel Support Frame:** The chemical resistant epoxy coated steel frame adds mechanical strength. Optional all polypropylene construction is available if desired; see accessories.
- F. Hinged Front Sash:** When closed, the cabinet sash protects the contents from inadvertent external contact and better isolates the air within. The sash is easy to open and close.
- G. Work Surface:** The internal work surface can be fitted with a polypropylene tray.
- H. Pass Through Ports:** Electrical cords and cables are safely routed into the cabinet through ports on the back.
- I. Electrostatic Pre-Filter:** The electrostatic pre-filter is accessible from inside the chamber and 91% effective down to 1-3 microns.
- J. Filter Door Key:** Filter access keys prevent unauthorized removal or accidental exposure to dirty filters.
- K. Dynamic Filtration Chamber:** The dynamic filter chamber prevents any possible leakage of contaminated air by pressurizing the fan plenum (positive air) and depressuring the filter compartment (negative air).
- L. Internal Manual Speed Controller:** Authorized personnel may set the EC blower speed as desired.
- M. Stand:** Optional mobile cart with locking casters.
- N. Safety Filter:** The optional carbon or HEPA/ULPA safety filter adds an additional layer of protection.

**360 Degree Visibility:** Clear back and side panels allow ambient light into the chamber and provide users with an unobstructed view of contents.

**Assembly:** Unit is shipped ready to assemble with simple hardware.

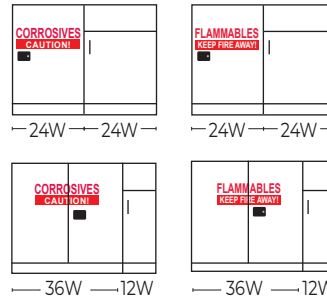
**CONFIGURABLE BASE  
COMBINATIONS**

**48 WIDE**

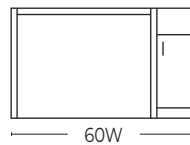
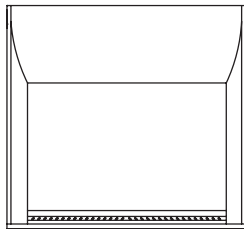


**48" WIDE**

(ANY COMBINATION FLAMMABLE, CORROSIVE or SINK)

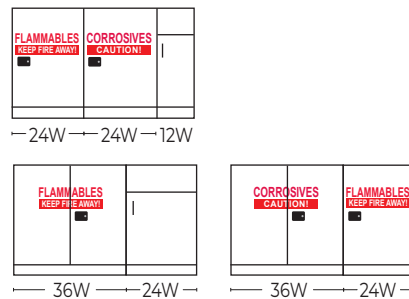


**60 WIDE**

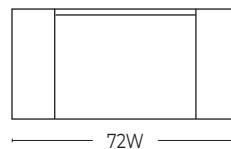
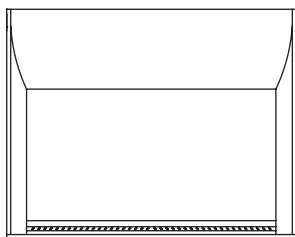


**60" WIDE**

(ANY COMBINATION FLAMMABLE, CORROSIVE or SINK)



**72 WIDE**



**72" WIDE**

(ANY COMBINATION FLAMMABLE, CORROSIVE or SINK)

