

HIGH SIGHT LINE GEN II VERTICAL SASH	2
HIGH SIGHT LINE GEN II COMBINATION SASH	4
MULTI-UNIT GEN II VAV - VARIABLE AIR VOLUME	6
DEMONSTRATION GEN II FRONT/REAR SASH	8
STUDENT WORKSTATION GEN II 4-SIDED VIEWING	10
STUDENT WORKSTATION GEN II 3-SIDED VIEWING	12
ADA GEN II VERTICAL SASH	14
ADA GEN II COMBINATION SASH	16
ADA STUDENT WORKSTATION GEN II 4-SIDED VIEWING	18
ADA STUDENT WORKSTATION GEN II 3-SIDED VIEWING	20
BASIC GEN II BY-PASS	22
PORTABLE GEN II	24
BASE CABINETS	25
MOBILE CABINETS	27
ACCESSORIES	28

REV. 5/13/21

©2021 STEVENS INDUSTRIES, INC.  
ALL RIGHTS RESERVED.  
Due to continuing product  
development, Stevens reserves  
the right to change specifications  
without notice.



**ADVANTAGE  
SCIENTIFIC** GEN II



**51805 STYLE**

Design is high performance hood as an individual hood for constant volume extraction blower (not included). Hood incorporates both by-pass and airfoil features.

The GEN II design has contour form vertical side posts and slope back header with radius lower horizontal edge. Design promotes smooth airflow into hood opening. Hood fascia has 36" high clear sight view. Full opening 29" sash ideal for unrestricted equipment setup access. Advantage Scientific hood includes standard 18" vertical sash stops to promote efficient working extraction and face velocity.

3 models available: 48"W: **5180548**  
60"W: **5180560**  
72"W: **5180572**

**51806 CUSTOM**

Same as 51805, customized with factory-installed adds.

3 models available: 48"W: **5180648** 2-digit add codes  
60"W: **5180660** -----  
72"W: **5180672** -----

Factory-Installed Adds (must be ordered with fume hood – not sold separately):

- 01 52005 Airflow Monitor
- 02 52006 Digital Airflow Monitor
- 03 External Vacuum Breaker (as required by specific local, city or state codes)
- 04 Remote Air
- 05 Remote Gas
- 06 Remote Vacuum

**CONSTRUCTION FEATURES**

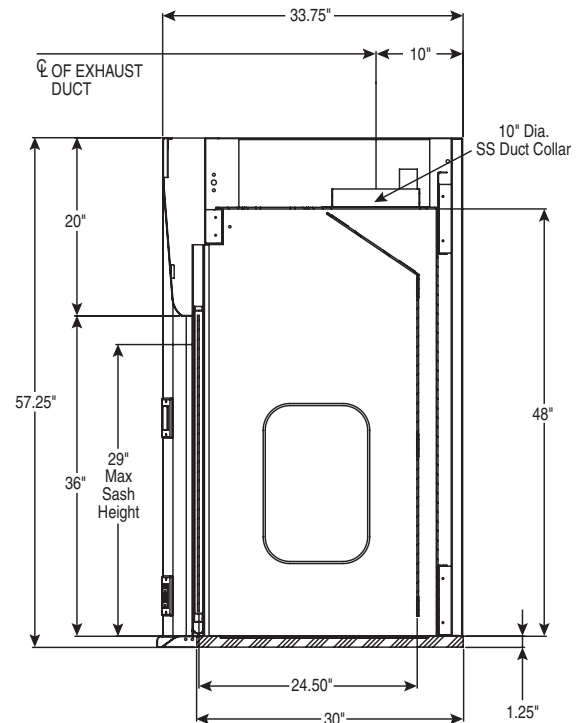
- Solid galvanized frame construction allows disassembly for constricted installation access areas
- Powder coat exterior finishes
- Shaft drive sash
- Polyresin liner
- LED light fixture
- Stainless steel full width finger lift sash
- 18" open sash stop
- 10" exhaust duct collar

**STANDARD EQUIPMENT (factory-installed)**

- 2 GFI duplex
- Blower switch
- Light switch
- Cup sink
- Remote cold water faucet with in-line vacuum breaker
- Remote gas fixture
- Black epoxy 1/4" dished top

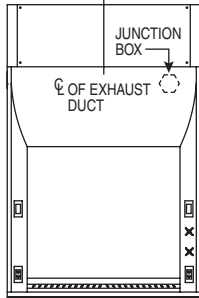
**OPTION ACCESSORIES**

- 52001 Ceiling Enclosure
- 52004 Lattice Assembly
- 52005 Airflow Monitor
- 52006 Digital Airflow Monitor
- Fume Hood Base



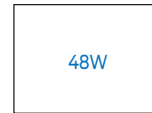
## BASE CABINETS (SEE OFFERING BELOW)

### 5180548 / 5180648

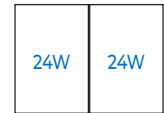


	W	H	D
Superstructure:	48	56	33 <sup>3</sup> / <sub>4</sub>
Worktop:	48	1 <sup>1</sup> / <sub>4</sub>	30
Hood Opening:	38	29	
Hood View:	38	36	
Exhaust Parameters:	739 CFM		.26 SP
Hood Weight:	200 pounds (approx.)		

48" BASE CABINET OR  
TWO 24" BASE CABINETS  
(ANY COMBINATION)

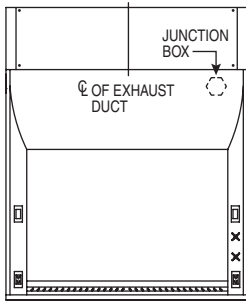


51903  
41002 (31D)



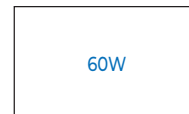
51900 51900  
51910 51910  
51920 51920

### 5180560 / 5180660

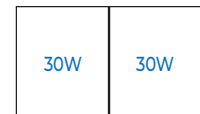


	W	H	D
Superstructure:	60	56	33 <sup>3</sup> / <sub>4</sub>
Worktop:	60	1 <sup>1</sup> / <sub>4</sub>	30
Hood Opening:	50	29	
Hood View:	50	36	
Exhaust Parameters:	972 CFM		.32 SP
Hood Weight:	225 pounds (approx.)		

60" BASE CABINET OR  
TWO 30" BASE CABINETS  
(ANY COMBINATION)

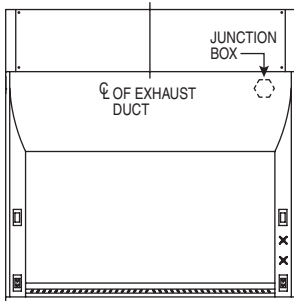


41004 (31D)



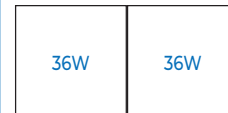
51901 51901  
51911 51911  
51921 51921

### 5180572 / 5180672

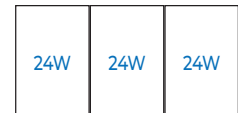


	W	H	D
Superstructure:	72	56	33 <sup>3</sup> / <sub>4</sub>
Worktop:	72	1 <sup>1</sup> / <sub>4</sub>	30
Hood Opening:	62	29	
Hood View:	62	36	
Exhaust Parameters:	1206 CFM		.41 SP
Hood Weight:	270 pounds (approx.)		

TWO 36" BASE CABINETS OR  
THREE 24" BASE CABINETS  
(ANY COMBINATION)



51902 51902  
51912 51912  
51922 51922  
41000 (31D)



51900 51900 51900  
51910 51910 51910  
51920 51920 51920

## BASE CABINET OFFERING



51900 51910 51920  
24W



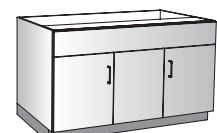
51901 51911 51921  
30W



51902 51912 51922 41000 (31D)  
36W



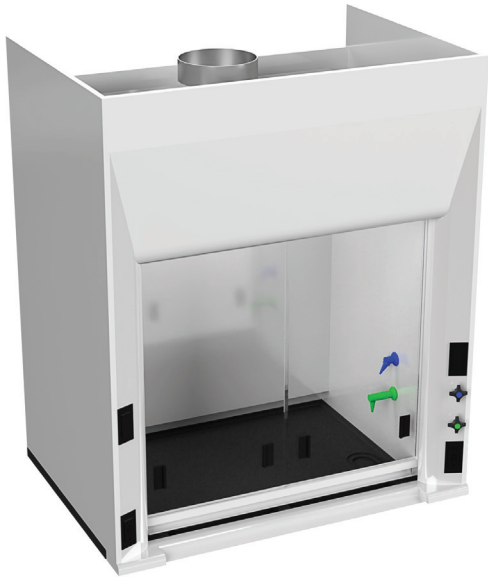
51903 41002 (31D)  
48W



41004 (31D)  
60W



**ADVANTAGE  
SCIENTIFIC** GEN II



### 51810 STYLE

Combination sash with sliding door panels in vertical sash frame. Combination sash allows vertical sash to be down while sliding door panel may be opened for access, reducing open exposure to hood interior as added safety feature. Design is high performance hood as an individual hood for constant volume extraction blower (not included). Hood incorporates both by-pass and airfoil features.

The GEN II design has contour form vertical side posts and slope back header with radius lower horizontal edge. Design promotes smooth airflow into hood opening. Hood fascia has 36" high clear sight view. Full opening 29" sash ideal for unrestricted equipment setup access. Advantage Scientific hood includes standard 18" vertical sash stops to promote efficient working extraction and face velocity.

3 models available: 48"W: **5181048**  
60"W: **5181060**  
72"W: **5181072**

### 51811 CUSTOM

Same as 51810, customized with factory-installed adds.

3 models available: 48"W: **5181148**  
60"W: **5181160**  
72"W: **5181172**

2-digit add codes

---	---
---	---
---	---

Factory-Installed Adds (must be ordered with fume hood – not sold separately):

- 01 52005 Airflow Monitor
- 02 52006 Digital Airflow Monitor
- 03 External Vacuum Breaker (as required by specific local, city or state codes)
- 04 Remote Air
- 05 Remote Gas
- 06 Remote Vacuum

### CONSTRUCTION FEATURES

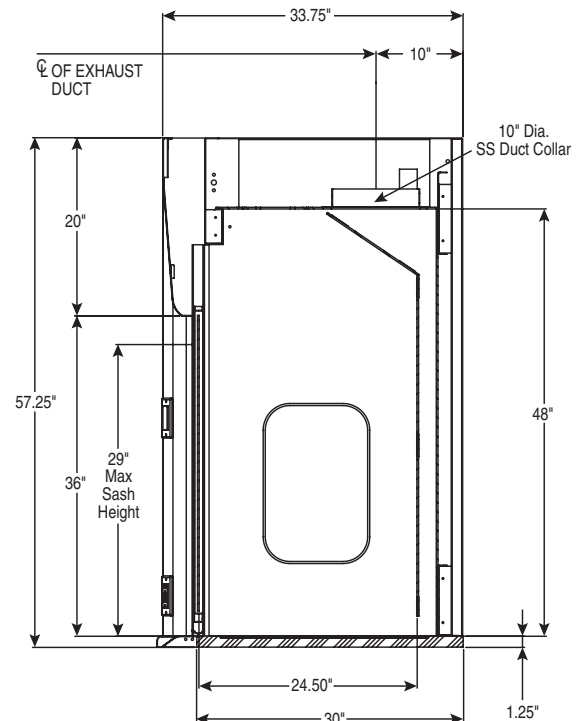
- Solid galvanized frame construction allows disassembly for constricted installation access areas
- Powder coat exterior finishes
- Shaft drive sash
- Polyresin liner
- LED light fixture
- Stainless steel full width finger lift sash
- Vertical sash with horizontal sliding panes
- 18" open sash stop
- 10" exhaust duct collar

### STANDARD EQUIPMENT (factory-installed)

- 2 GFI duplex
- Blower switch
- Light switch
- Cup sink
- Remote cold water faucet with in-line vacuum breaker
- Remote gas fixture
- Black epoxy 1/4" dished top

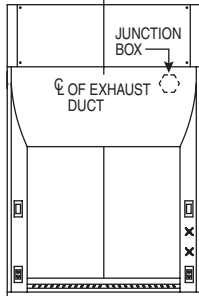
### OPTION ACCESSORIES

- 52001 Ceiling Enclosure
- 52004 Lattice Assembly
- 52005 Airflow Monitor
- 52006 Digital Airflow Monitor
- Fume Hood Base



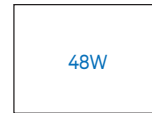
## BASE CABINETS (SEE OFFERING BELOW)

### 5181048 / 5181148



	W	H	D
Superstructure:	48	56	33 <sup>3</sup> / <sub>4</sub>
Worktop:	48	1 <sup>1</sup> / <sub>4</sub>	30
Hood Opening:	38	29	
Hood View:	38	36	
Exhaust Parameters:	739 CFM	.26 SP	
Hood Weight:	200 pounds (approx.)		

48" BASE CABINET OR  
TWO 24" BASE CABINETS  
(ANY COMBINATION)

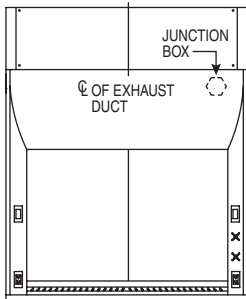


51903  
41002 (31D)



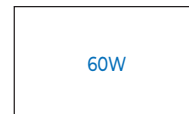
51900 51900  
51910 51910  
51920 51920

### 5181060 / 5181160

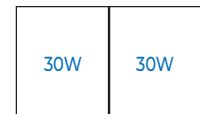


	W	H	D
Superstructure:	60	56	33 <sup>3</sup> / <sub>4</sub>
Worktop:	60	1 <sup>1</sup> / <sub>4</sub>	30
Hood Opening:	50	29	
Hood View:	50	36	
Exhaust Parameters:	972 CFM	.32 SP	
Hood Weight:	225 pounds (approx.)		

60" BASE CABINET OR  
TWO 30" BASE CABINETS  
(ANY COMBINATION)

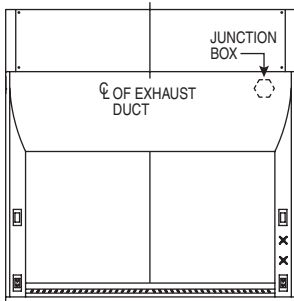


41004 (31D)



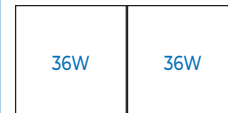
51901 51901  
51911 51911  
51921 51921

### 5181072 / 5181172

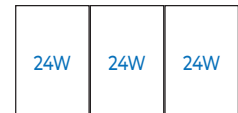


	W	H	D
Superstructure:	72	56	33 <sup>3</sup> / <sub>4</sub>
Worktop:	72	1 <sup>1</sup> / <sub>4</sub>	30
Hood Opening:	62	29	
Hood View:	62	36	
Exhaust Parameters:	1206 CFM	.41 SP	
Hood Weight:	270 pounds (approx.)		

TWO 36" BASE CABINETS OR  
THREE 24" BASE CABINETS  
(ANY COMBINATION)



51902 51902  
51912 51912  
51922 51922  
41000 (31D)



51900 51900 51900  
51910 51910 51910  
51920 51920 51920

## BASE CABINET OFFERING



51900 51910 51920  
24W



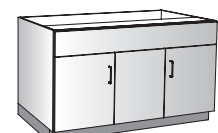
51901 51911 51921  
30W



51902 51912 51922 41000 (31D)  
36W



51903 41002 (31D)  
48W



41004 (31D)  
60W



**ADVANTAGE  
SCIENTIFIC** GEN II



**51815 STYLE**

Variable air volume (VAV) restrictive by-pass hood. High performance hood designed for lab with multiple installed hoods and central extraction blower. Airflow balancing and blower by HVAC mechanical contractor. Hood incorporates flush mount airfoil.

The GEN II design has contour form vertical side posts and slope back header with radius lower horizontal edge. Design promotes smooth airflow into hood opening. Hood fascia has 36" high clear sight view. Full opening 29" sash ideal for unrestricted equipment setup access. Advantage Scientific hood includes standard 18" vertical sash stops to promote efficient working extraction and face velocity.

3 models available: 48"W: **5181548**  
60"W: **5181560**  
72"W: **5181572**

**51816 CUSTOM**

Same as 51815, customized with factory-installed adds.

3 models available: 48"W: **5181648**  
60"W: **5181660**  
72"W: **5181672**

2-digit add codes
-----
-----
-----

**Factory-Installed Adds** (must be ordered with fume hood – not sold separately):

- 01** 52005 Airflow Monitor
- 02** 52006 Digital Airflow Monitor
- 03** External Vacuum Breaker (as required by specific local, city or state codes)
- 04** Remote Air
- 05** Remote Gas
- 06** Remote Vacuum

**CONSTRUCTION FEATURES**

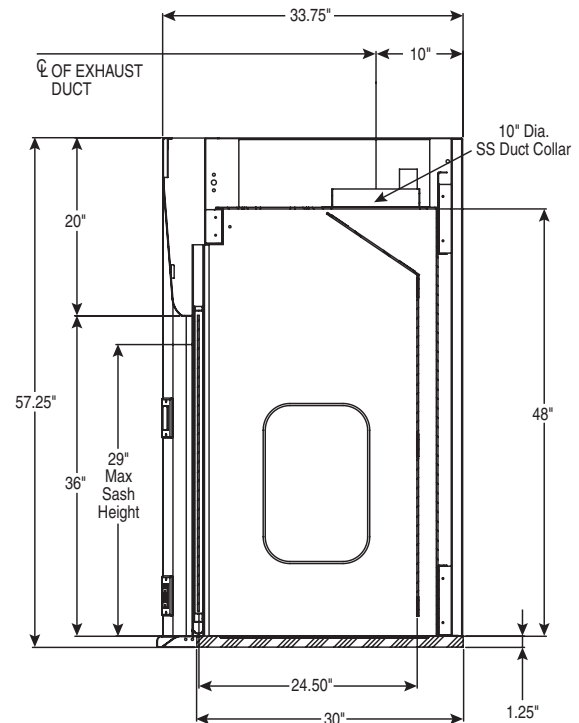
- Solid galvanized frame construction allows disassembly for constricted installation access areas
- Powder coat exterior finishes
- Shaft drive sash
- Polyresin liner
- LED light fixture
- Stainless steel full width finger lift sash
- 18" open sash stop
- 10" exhaust duct collar

**STANDARD EQUIPMENT** (factory-installed)

- 2 GFI duplex
- Light switch
- Cup sink
- Remote cold water faucet with in-line vacuum breaker
- Remote gas fixture
- Black epoxy 1/4" dished top

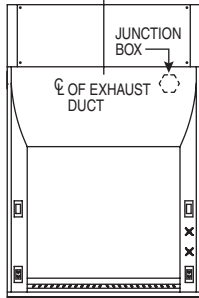
**OPTION ACCESSORIES**

- 52001 Ceiling Enclosure
- 52004 Lattice Assembly
- 52005 Airflow Monitor
- 52006 Digital Airflow Monitor
- Fume Hood Base



## BASE CABINETS (SEE OFFERING BELOW)

### 5181548 / 5181648

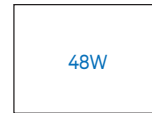


	W	H	D
Superstructure:	48	56	33 <sup>3</sup> / <sub>4</sub>
Worktop:	48	11 <sup>1</sup> / <sub>4</sub>	30
Hood Opening:	38	29	
Hood View:	38	36	

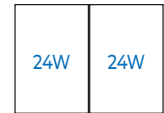
Exhaust Parameters: 739 CFM .26 SP  
Hood Weight: 200 pounds (approx.)

Designed for multiple unit installations  
with common blower extraction system.

48" BASE CABINET OR  
TWO 24" BASE CABINETS  
(ANY COMBINATION)

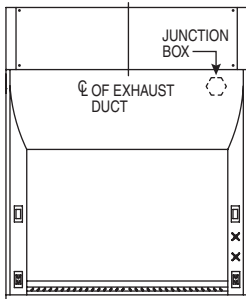


51903  
41002 (31D)



51900 51900  
51910 51910  
51920 51920

### 5181560 / 5181660

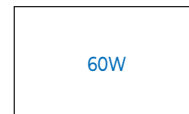


	W	H	D
Superstructure:	60	56	33 <sup>3</sup> / <sub>4</sub>
Worktop:	60	11 <sup>1</sup> / <sub>4</sub>	30
Hood Opening:	50	29	
Hood View:	50	36	

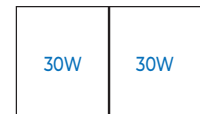
Exhaust Parameters: 972 CFM .32 SP  
Hood Weight: 225 pounds (approx.)

Designed for multiple unit installations  
with common blower extraction system.

60" BASE CABINET OR  
TWO 30" BASE CABINETS  
(ANY COMBINATION)

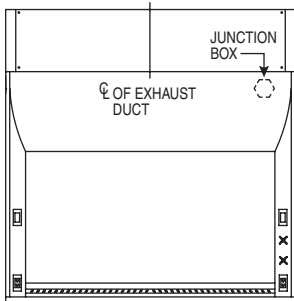


41004 (31D)



51901 51901  
51911 51911  
51921 51921

### 5181572 / 5181672

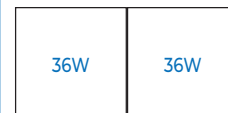


	W	H	D
Superstructure:	72	56	33 <sup>3</sup> / <sub>4</sub>
Worktop:	72	11 <sup>1</sup> / <sub>4</sub>	30
Hood Opening:	62	29	
Hood View:	62	36	

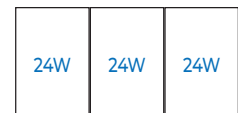
Exhaust Parameters: 1206 CFM .41 SP  
Hood Weight: 270 pounds (approx.)

Designed for multiple unit installations  
with common blower extraction system.

TWO 36" BASE CABINETS OR  
THREE 24" BASE CABINETS  
(ANY COMBINATION)



51902 51902  
51912 51912  
51922 51922  
41000 (31D)



51900 51900 51900  
51910 51910 51910  
51920 51920 51920

## BASE CABINET OFFERING



51900 51910 51920  
24W



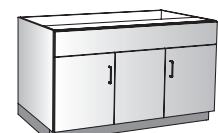
51901 51911 51921  
30W



51902 51912 51922 41000 (31D)  
36W



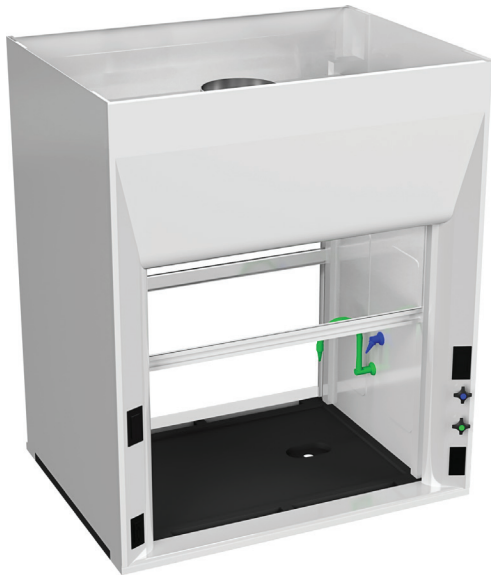
51903 41002 (31D)  
48W



41004 (31D)  
60W



**ADVANTAGE  
SCIENTIFIC** GEN II



**51820 STYLE**

Demonstration hood has front and rear access vertical sashes. Ideal for rear see-thru demonstration viewing. Sashes have interlock, preventing simultaneous opening of both sashes. Ideal for stand-alone use where both viewing and experiment participation is desired. Unit also ideal for in-wall installation: student from classroom side and instructor operation from a more secure prep room area. GEN II hood includes additional rear sash lock to secure access into storage prep areas. Hood incorporates both by-pass and airfoil features.

The GEN II design has contour form vertical side posts and slope back header with radius lower horizontal edge. Design promotes smooth airflow into hood opening. Hood fascia has 36" high clear sight view. Full opening 29" sash ideal for unrestricted equipment setup access. Advantage Scientific hood includes standard 18" vertical sash stops to promote efficient working extraction and face velocity.

3 models available: 48"W: **5182048**  
60"W: **5182060**  
72"W: **5182072**

**51821 CUSTOM**

Same as 51820, customized with factory-installed adds.

3 models available: 48"W: **5182148**  
60"W: **5182160**  
72"W: **5182172**

2-digit add codes	
---	---
---	---
---	---

**Factory-Installed Adds** (must be ordered with fume hood – not sold separately):

- 01** 52005 Airflow Monitor
- 02** 52006 Digital Airflow Monitor
- 03** External Vacuum Breaker (as required by specific local, city or state codes)
- 04** Remote Air
- 05** Remote Gas
- 06** Remote Vacuum

**CONSTRUCTION FEATURES**

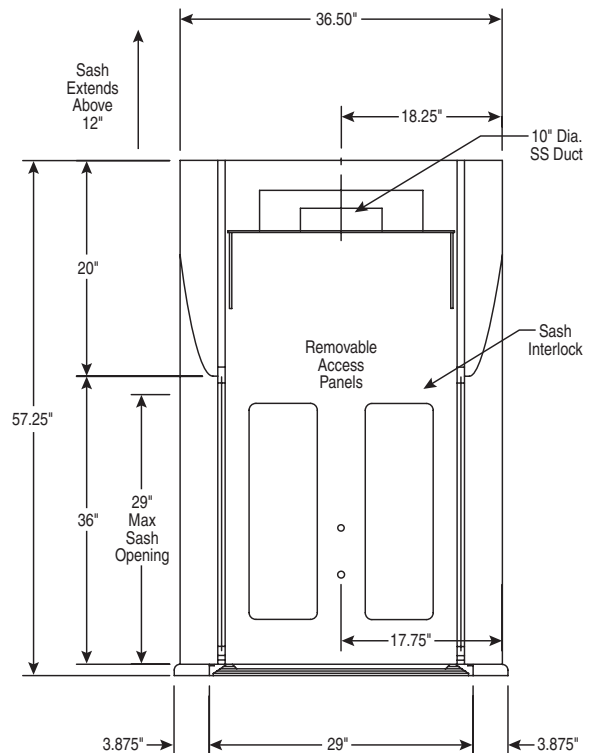
- Solid galvanized frame construction allows disassembly for constricted installation access areas
- Powder coat exterior finishes
- Shaft drive sashes with interlocks
- Polyresin liner
- LED light fixture
- Stainless steel full width finger lift sashes, front and back
- Security sash locks
- 18" open sash stop
- 10" exhaust duct collar

**STANDARD EQUIPMENT** (factory-installed)

- 2 GFI duplex
- Blower switch
- Light switch
- Cup sink
- Remote cold water faucet with in-line vacuum breaker
- Remote gas fixture
- Black epoxy 1/4" dished top

**OPTION ACCESSORIES**

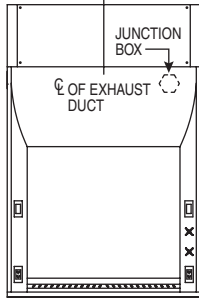
- 52001 Ceiling Enclosure
- 52004 Lattice Assembly
- 52005 Airflow Monitor
- 52006 Digital Airflow Monitor
- Fume Hood Base





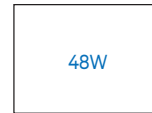
## BASE CABINETS (SEE OFFERING BELOW)

### 5182048 / 5182148



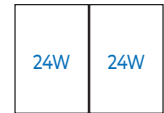
	W	H	D
Superstructure:	48	56	36½
Worktop:	48	1¼	30
Hood Opening:	38	29	
Hood View:	38	36	
Exhaust Parameters:	739 CFM	.26 SP	
Hood Weight:	200 pounds (approx.)		

48" BASE CABINET OR  
TWO 24" BASE CABINETS  
(ANY COMBINATION)



48W

51903  
41003

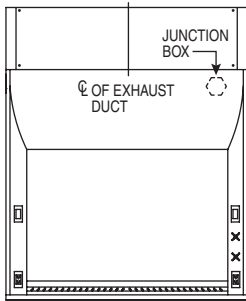


24W

24W

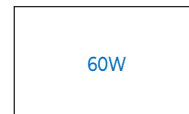
51900 51900  
51910 51910  
51920 51920

### 5182060 / 5182160



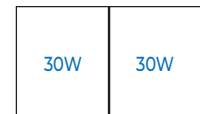
	W	H	D
Superstructure:	60	56	36½
Worktop:	60	1¼	30
Hood Opening:	50	29	
Hood View:	50	36	
Exhaust Parameters:	972 CFM	.32 SP	
Hood Weight:	225 pounds (approx.)		

60" BASE CABINET OR  
TWO 30" BASE CABINETS  
(ANY COMBINATION)



60W

41005

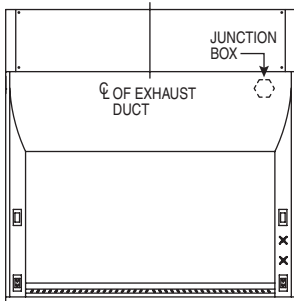


30W

30W

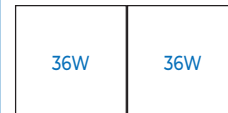
51901 51901  
51911 51911  
51921 51921

### 5182072 / 5182172



	W	H	D
Superstructure:	72	56	36½
Worktop:	72	1¼	30
Hood Opening:	62	29	
Hood View:	62	36	
Exhaust Parameters:	1206 CFM	.41 SP	
Hood Weight:	270 pounds (approx.)		

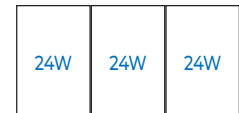
TWO 36" BASE CABINETS OR  
THREE 24" BASE CABINETS  
(ANY COMBINATION)



36W

36W

51902 51902  
51912 51912  
51922 51922  
41001



24W

24W

24W

51900 51900 51900  
51910 51910 51910  
51920 51920 51920

## BASE CABINET OFFERING



51900 51910 51920

24W



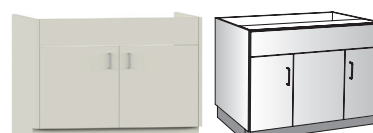
51901 51911 51921

30W



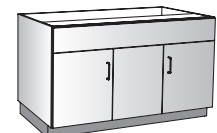
51902 51912 51922 41001

36W



51903 41003

48W



41005

60W



**ADVANTAGE  
SCIENTIFIC** GEN II



**51825 STYLE**

Student workstation hood is designed for front face vertical sash operation and 4-sided viewing (front, both ends and back). High performance workstation hood is ideal for thru-wall and stand-alone application. Workstation hoods can also be placed end-to-end, forming island or peninsula arrangements. Great multi-use in a high participation laboratory setting.

The GEN II design allows use as a single- or multi-unit exhaust blower setup. Hood fascia has 42" high clear sight view. Blower and airflow balancing required by HVAC contractor.

3 models available: 48"W: **5182548**  
60"W: **5182560**  
72"W: **5182572**

**51826 CUSTOM**

Same as 51825, customized with factory-installed adds.

3 models available: 48"W: **5182648**  
60"W: **5182660**  
72"W: **5182672**

2-digit add codes	
---	---
---	---
---	---

**Factory-Installed Adds** (must be ordered with fume hood – not sold separately):

- 01** 52005 Airflow Monitor
- 02** 52006 Digital Airflow Monitor
- 03** External Vacuum Breaker (as required by specific local, city or state codes)
- 04** Remote Air
- 05** Remote Gas
- 06** Remote Vacuum

**CONSTRUCTION FEATURES**

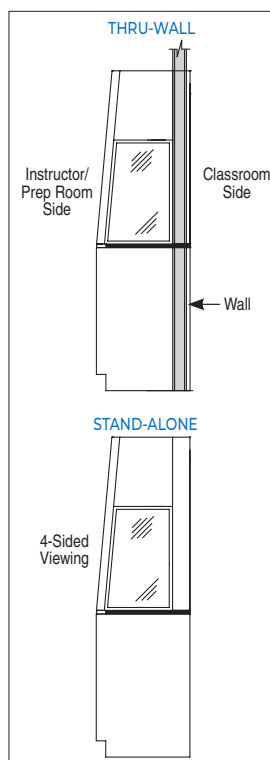
- Solid galvanized frame construction allows disassembly for constricted installation access areas
- Full view safety glass back
- Powder coat exterior finishes
- Shaft drive sash
- LED light fixture
- Stainless steel full width finger lift sash
- 18" open sash stop
- 10" exhaust duct collar

**STANDARD EQUIPMENT** (factory-installed)

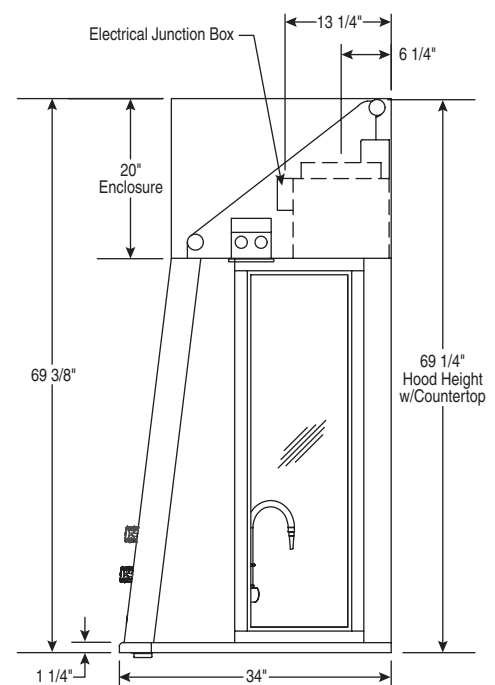
- 2 GFI duplex
- Blower switch
- Light switch
- Cup sink
- Remote cold water faucet with in-line vacuum breaker
- Remote gas fixture
- Black epoxy 1/4" dished top

**OPTION ACCESSORIES**

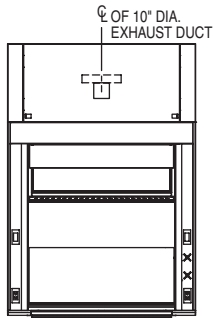
- 52001 Ceiling Enclosure
- 52004 Lattice Assembly
- 52005 Airflow Monitor
- 52006 Digital Airflow Monitor
- Fume Hood Base



**FIXED REAR VIEW WINDOW**



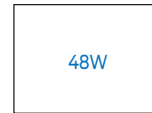
## BASE CABINETS (SEE OFFERING BELOW)



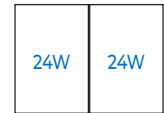
### 5182548 / 5182648

	W	H	D
Superstructure:	48	69 <sup>3</sup> / <sub>8</sub>	34
Worktop:	48	1 <sup>1</sup> / <sub>4</sub>	30
Hood Opening:	45 <sup>3</sup> / <sub>8</sub>	29	
Exhaust Parameters:	770 CFM		.24 SP
Shipping Weight: (hood only)	400 pounds (approx.)		

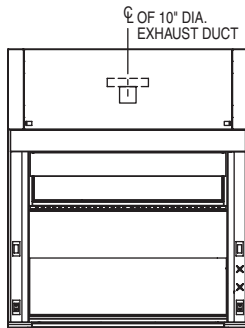
48" BASE CABINET OR  
TWO 24" BASE CABINETS  
(ANY COMBINATION)



48W  
51903  
41002 (31D)



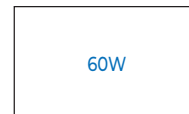
24W 24W  
51900 51900  
51910 51910  
51920 51920



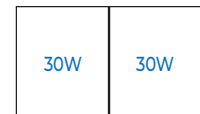
### 5182560 / 5182660

	W	H	D
Superstructure:	60	69 <sup>3</sup> / <sub>8</sub>	34
Worktop:	60	1 <sup>1</sup> / <sub>4</sub>	30
Hood Opening:	57 <sup>3</sup> / <sub>8</sub>	29	
Exhaust Parameters:	1000 CFM		.30 SP
Shipping Weight: (hood only)	480 pounds (approx.)		

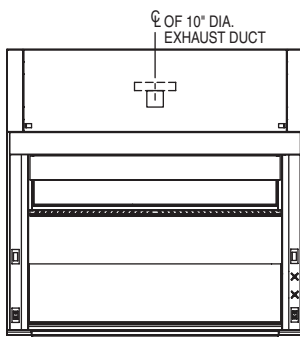
60" BASE CABINET OR  
TWO 30" BASE CABINETS  
(ANY COMBINATION)



60W  
41004 (31D)



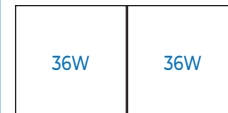
30W 30W  
51901 51901  
51911 51911  
51921 51921



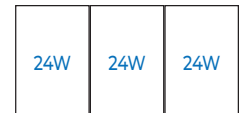
### 5182572 / 5182672

	W	H	D
Superstructure:	72	69 <sup>3</sup> / <sub>8</sub>	34
Worktop:	72	1 <sup>1</sup> / <sub>4</sub>	30
Hood Opening:	69 <sup>3</sup> / <sub>8</sub>	29	
Exhaust Parameters:	1250 CFM		.39 SP
Shipping Weight: (hood only)	560 pounds (approx.)		

TWO 36" BASE CABINETS OR  
THREE 24" BASE CABINETS  
(ANY COMBINATION)



36W 36W  
51902 51902  
51912 51912  
51922 51922  
41000 (31D)



24W 24W 24W  
51900 51900 51900  
51910 51910 51910  
51920 51920 51920

## BASE CABINET OFFERING



51900 51910 51920  
24W



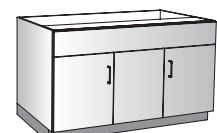
51901 51911 51921  
30W



51902 51912 51922 41000 (31D)  
36W



51903 41002 (31D)  
48W



41004 (31D)  
60W



**ADVANTAGE  
SCIENTIFIC** GEN II



**51845 STYLE**

Student workstation hood is designed for front face vertical sash operation and 3-sided viewing (front and both ends). High performance workstation hood is ideal for stand-alone application against a wall. Workstation hoods can also be placed back-to-back (double face) and end-to-end, forming island or peninsula arrangements. Great multi-use in a high participation laboratory setting.

The GEN II design allows use as a single- or multi-unit exhaust blower setup. Hood fascia has 42" high clear sight view. Blower and airflow balancing required by HVAC contractor.

3 models available: 48"W: **5184548**  
60"W: **5184560**  
72"W: **5184572**

**51846 CUSTOM**

Same as 51845, customized with factory-installed adds.

3 models available: 48"W: **5184648**  
60"W: **5184660**  
72"W: **5184672**

2-digit add codes	
---	---
---	---
---	---

**Factory-Installed Adds** (must be ordered with fume hood – not sold separately):

- 01** 52005 Airflow Monitor
- 02** 52006 Digital Airflow Monitor
- 03** External Vacuum Breaker (as required by specific local, city or state codes)
- 04** Remote Air
- 05** Remote Gas
- 06** Remote Vacuum

**CONSTRUCTION FEATURES**

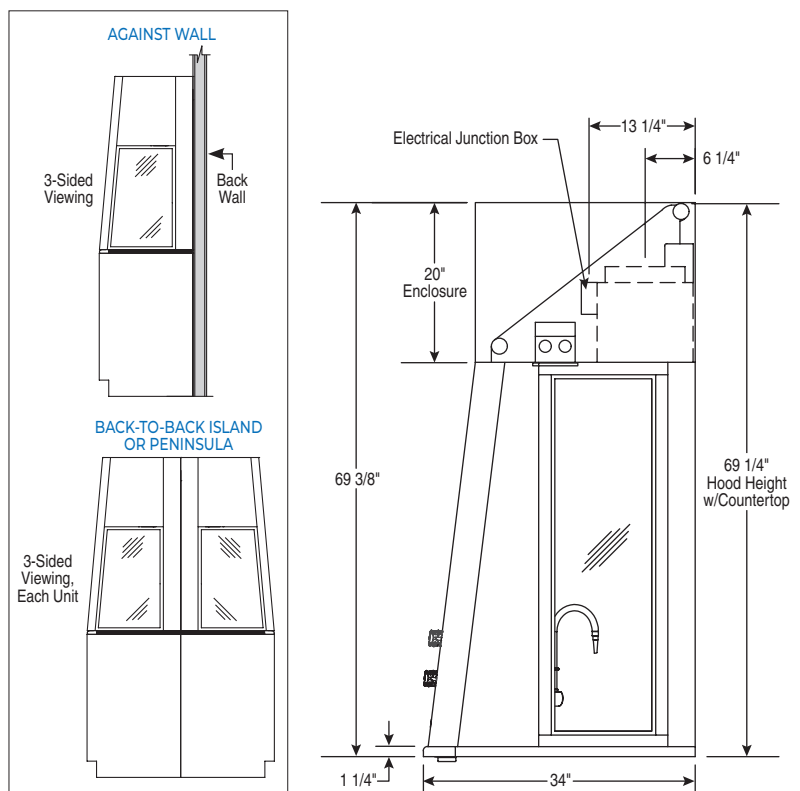
- Solid galvanized frame construction allows disassembly for constricted installation access areas
- Polysin back panel
- Powder coat exterior finishes
- Shaft drive sash
- LED light fixture
- Stainless steel full width finger lift sash
- 18" open sash stop
- 10" exhaust duct collar

**STANDARD EQUIPMENT** (factory-installed)

- 2 GFI duplex
- Blower switch
- Light switch
- Cup sink
- Remote cold water faucet with in-line vacuum breaker
- Remote gas fixture
- Black epoxy 1/4" dished top

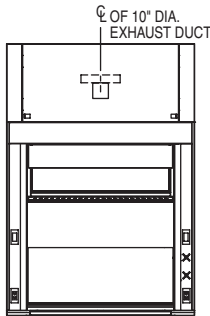
**OPTION ACCESSORIES**

- 52001 Ceiling Enclosure
- 52004 Lattice Assembly
- 52005 Airflow Monitor
- 52006 Digital Airflow Monitor
- Fume Hood Base



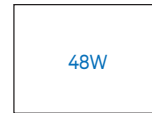
## BASE CABINETS (SEE OFFERING BELOW)

### 5184548 / 5184648



	W	H	D
Superstructure:	48	69 <sup>3</sup> / <sub>8</sub>	34
Worktop:	48	1 <sup>1</sup> / <sub>4</sub>	30
Hood Opening:	45 <sup>3</sup> / <sub>8</sub>	29	
Exhaust Parameters:	770 CFM		.24 SP
Shipping Weight: (hood only)	400 pounds (approx.)		

48" BASE CABINET OR  
TWO 24" BASE CABINETS  
(ANY COMBINATION)

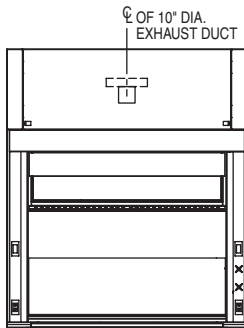


48W  
51903  
41002 (31D)



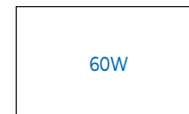
24W 24W  
51900 51900  
51910 51910  
51920 51920

### 5184560 / 5184660

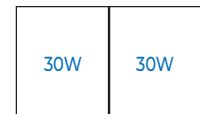


	W	H	D
Superstructure:	60	69 <sup>3</sup> / <sub>8</sub>	34
Worktop:	60	1 <sup>1</sup> / <sub>4</sub>	30
Hood Opening:	57 <sup>3</sup> / <sub>8</sub>	29	
Exhaust Parameters:	1000 CFM		.30 SP
Shipping Weight: (hood only)	480 pounds (approx.)		

60" BASE CABINET OR  
TWO 30" BASE CABINETS  
(ANY COMBINATION)

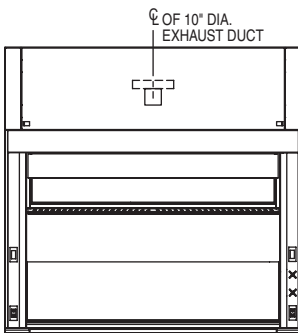


60W  
41004 (31D)



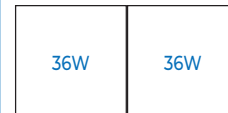
30W 30W  
51901 51901  
51911 51911  
51921 51921

### 5184572 / 5184672

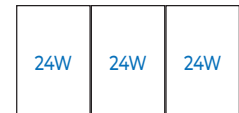


	W	H	D
Superstructure:	72	69 <sup>3</sup> / <sub>8</sub>	34
Worktop:	72	1 <sup>1</sup> / <sub>4</sub>	30
Hood Opening:	69 <sup>3</sup> / <sub>8</sub>	29	
Exhaust Parameters:	1250 CFM		.39 SP
Shipping Weight: (hood only)	560 pounds (approx.)		

TWO 36" BASE CABINETS OR  
THREE 24" BASE CABINETS  
(ANY COMBINATION)



36W 36W  
51902 51902  
51912 51912  
51922 51922  
41000 (31D)



24W 24W 24W  
51900 51900 51900  
51910 51910 51910  
51920 51920 51920

## BASE CABINET OFFERING



51900 51910 51920  
24W



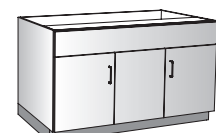
51901 51911 51921  
30W



51902 51912 51922 41000 (31D)  
36W



51903 41002 (31D)  
48W



41004 (31D)  
60W



**ADVANTAGE  
SCIENTIFIC** GEN II



**51830 STYLE**

ADA (Americans with Disabilities Act) high performance hood for constant volume extraction blower (not included). Hood incorporates both by-pass and airfoil with retainer spill trough to protect wheelchair users. Cup sink and remote lever control fixtures are positioned forward and lower within ADA specifications.

The GEN II design has contour form vertical side posts and slope back header with radius lower horizontal edge. Design promotes smooth airflow into hood opening. Hood fascia has 36" high clear sight view. Full opening 29" sash ideal for unrestricted equipment setup access. Advantage Scientific hood includes standard 18" vertical sash stops to promote efficient working extraction and face velocity.

3 models available: 48"W: **5183048**  
60"W: **5183060**  
72"W: **5183072**

**51831 CUSTOM**

Same as 51830, customized with factory-installed adds.

3 models available: 48"W: **5183148**  
60"W: **5183160**  
72"W: **5183172**

2-digit add codes	

**Factory-Installed Adds** (must be ordered with fume hood – not sold separately):

- 01 52005 Airflow Monitor
- 02 52006 Digital Airflow Monitor
- 03 External Vacuum Breaker (as required by specific local, city or state codes)
- 04 Remote Air
- 05 Remote Gas
- 06 Remote Vacuum

**CONSTRUCTION FEATURES**

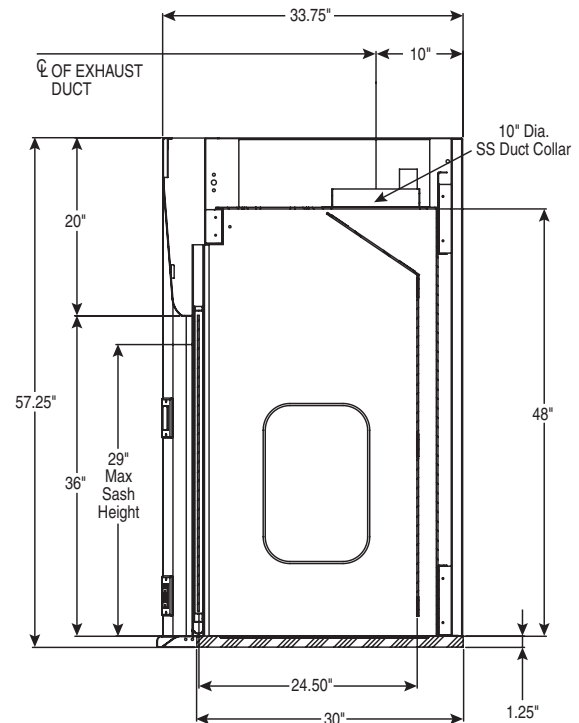
- Solid galvanized frame construction allows disassembly for constricted installation access areas
- Powder coat exterior finishes
- Shaft drive sash
- Polyresin liner
- LED light fixture
- Stainless steel full width finger lift sash
- 10" exhaust duct collar
- Secondary containment trough

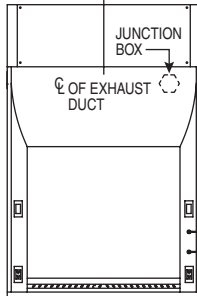
**STANDARD EQUIPMENT** (factory-installed)

- 2 GFI duplex
- Blower switch
- Light switch
- Cup sink
- Remote cold water faucet with in-line vacuum breaker
- Remote gas fixture
- Black epoxy 1/4" dished top

**OPTION ACCESSORIES**

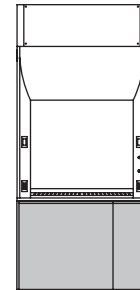
- 52001 Ceiling Enclosure
- 52004 Lattice Assembly
- 52005 Airflow Monitor
- 52006 Digital Airflow Monitor
- Fume Hood Base



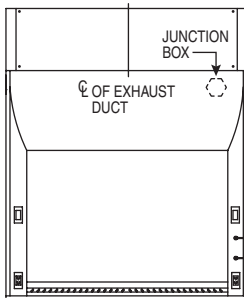
**BASE CABINETS**
**5183048 / 5183148**


	<b>W</b>	<b>H</b>	<b>D</b>
Superstructure:	48	56	33 <sup>3</sup> / <sub>4</sub>
Worktop:	48	1 <sup>1</sup> / <sub>4</sub>	30
Hood Opening:	38	29	
Hood View:	38	36	

Exhaust Parameters: 739 CFM .26 SP  
Hood Weight: 200 pounds (approx.)

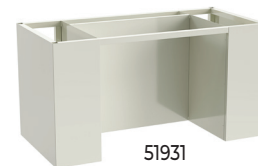
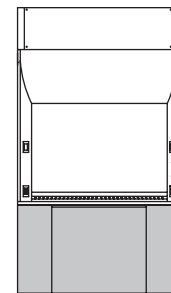


51930

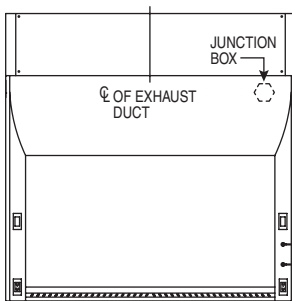
**5183060 / 5183160**


	<b>W</b>	<b>H</b>	<b>D</b>
Superstructure:	60	56	33 <sup>3</sup> / <sub>4</sub>
Worktop:	60	1 <sup>1</sup> / <sub>4</sub>	30
Hood Opening:	50	29	
Hood View:	50	36	

Exhaust Parameters: 972 CFM .32 SP  
Hood Weight: 225 pounds (approx.)

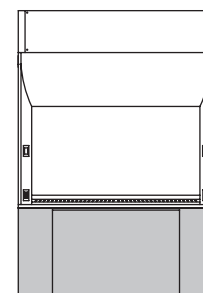


51931

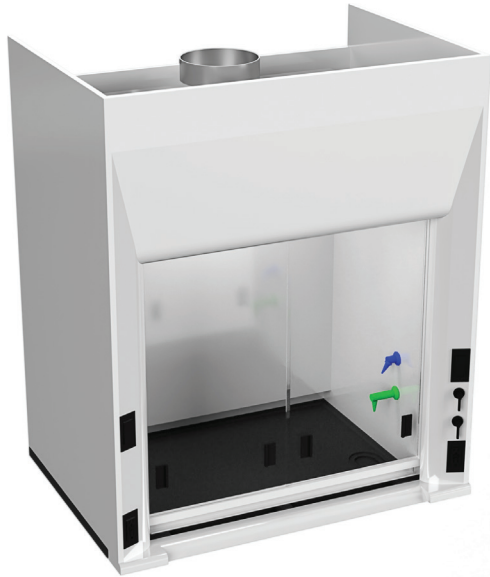
**5183072 / 5183172**


	<b>W</b>	<b>H</b>	<b>D</b>
Superstructure:	72	56	33 <sup>3</sup> / <sub>4</sub>
Worktop:	72	1 <sup>1</sup> / <sub>4</sub>	30
Hood Opening:	62	29	
Hood View:	62	36	

Exhaust Parameters: 1206 CFM .41 SP  
Hood Weight: 270 pounds (approx.)



51932


**ADVANTAGE  
SCIENTIFIC** GEN II

**51835 STYLE**

ADA (Americans with Disabilities Act) high performance hood for constant volume extraction blower (not included). Hood incorporates both by-pass and airfoil with retainer spill trough to protect wheelchair users. Cup sink and remote lever control fixtures are positioned forward and lower within ADA specifications. Combination sash with sliding door panels in vertical frame sash. Combination sash allows vertical sash to be down while sliding door panel may be opened for access, reducing open exposure to hood interior as added safety feature.

The GEN II design has contour form vertical side posts and slope back header with radius lower horizontal edge. Design promotes smooth airflow into hood opening. Hood fascia has 36" high clear sight view. Full opening 29" sash ideal for unrestricted equipment setup access. Advantage Scientific hood includes standard 18" vertical sash stops to promote efficient working extraction and face velocity.

3 models available: 48"W: **5183548**  
60"W: **5183560**  
72"W: **5183572**

**51836 CUSTOM**

Same as 51835, customized with factory-installed adds.

3 models available:	48"W:	<b>5183648</b>	2-digit add codes
	60"W:	<b>5183660</b>	-----
	72"W:	<b>5183672</b>	-----

**Factory-Installed Adds** (must be ordered with fume hood – not sold separately):

- 01** 52005 Airflow Monitor
- 02** 52006 Digital Airflow Monitor
- 03** External Vacuum Breaker (as required by specific local, city or state codes)
- 04** Remote Air
- 05** Remote Gas
- 06** Remote Vacuum

**CONSTRUCTION FEATURES**

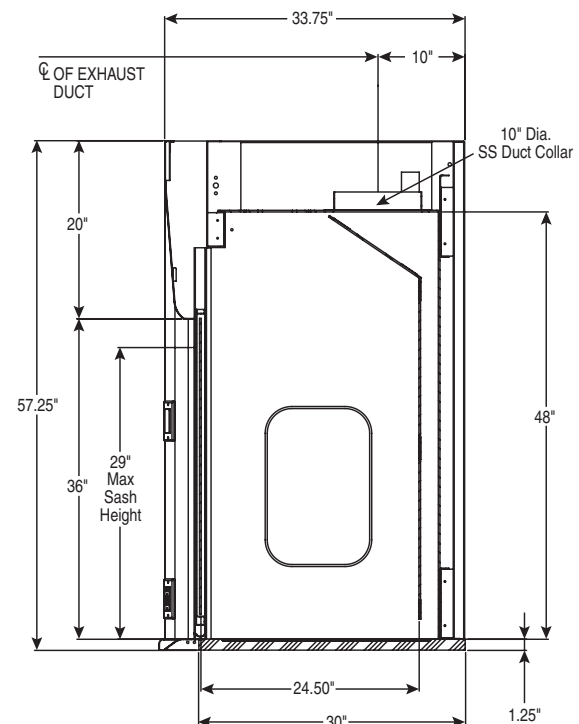
- Solid galvanized frame construction allows disassembly for constricted installation access areas
- Powder coat exterior finishes
- Shaft drive sash
- Polyresin liner
- LED light fixture
- Stainless steel full width finger lift sash
- Vertical sash with horizontal sliding panes
- 10" exhaust duct collar
- Secondary containment trough

**STANDARD EQUIPMENT** (factory-installed)

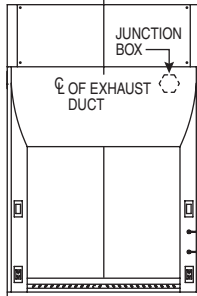
- 2 GFI duplex
- Blower switch
- Light switch
- Cup sink
- Remote cold water faucet with in-line vacuum breaker
- Remote gas fixture
- Black epoxy 1/4" dished top

**OPTION ACCESSORIES**

- 52001 Ceiling Enclosure
- 52004 Lattice Assembly
- 52005 Airflow Monitor
- 52006 Digital Airflow Monitor
- Fume Hood Base

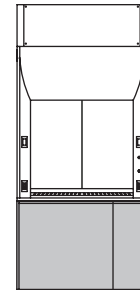
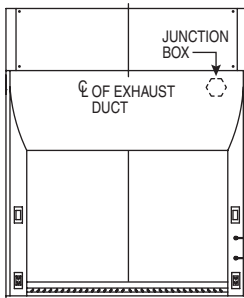




**BASE CABINETS**
**5183548 / 5183648**


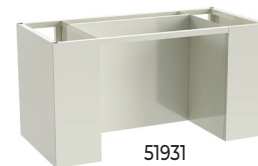
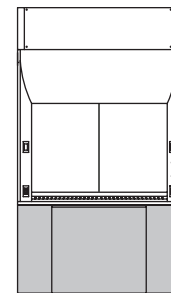
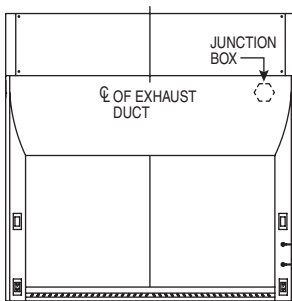
	<b>W</b>	<b>H</b>	<b>D</b>
Superstructure:	48	56	33 <sup>3</sup> / <sub>4</sub>
Worktop:	48	1 <sup>1</sup> / <sub>4</sub>	30
Hood Opening:	38	29	
Hood View:	38	36	

Exhaust Parameters: 739 CFM .26 SP  
Hood Weight: 200 pounds (approx.)


**5183560 / 5183660**


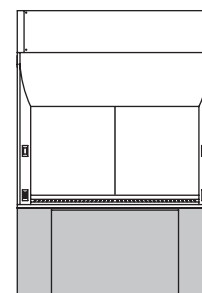
	<b>W</b>	<b>H</b>	<b>D</b>
Superstructure:	60	56	33 <sup>3</sup> / <sub>4</sub>
Worktop:	60	1 <sup>1</sup> / <sub>4</sub>	30
Hood Opening:	50	29	
Hood View:	50	36	

Exhaust Parameters: 972 CFM .32 SP  
Hood Weight: 225 pounds (approx.)


**5183572 / 5183672**


	<b>W</b>	<b>H</b>	<b>D</b>
Superstructure:	72	56	33 <sup>3</sup> / <sub>4</sub>
Worktop:	72	1 <sup>1</sup> / <sub>4</sub>	30
Hood Opening:	62	29	
Hood View:	62	36	

Exhaust Parameters: 1206 CFM .41 SP  
Hood Weight: 270 pounds (approx.)




**ADVANTAGE  
SCIENTIFIC** GEN II


## 51840 STYLE

ADA (Americans with Disabilities Act) student workstation hood is designed for front face vertical sash operation and 4-sided viewing (front, both ends and back). High performance workstation hood is ideal for thru-wall and stand-alone application. Workstation hoods can also be placed end-to-end, forming island or peninsula arrangements. Great multi-use in a high participation laboratory setting.

Hood incorporates both by-pass and airfoil with retainer spill trough to protect wheelchair users. Cup sink and remote lever control fixtures are positioned forward and lower within ADA specifications.

The GEN II design allows use as a single- or multi-unit exhaust blower setup. Hood fascia has 42" high clear sight view. Blower and airflow balancing required by HVAC contractor.

3 models available: 48"W: **5184048**  
60"W: **5184060**  
72"W: **5184072**

## 51841 CUSTOM

Same as 51840, customized with factory-installed adds.

3 models available: 48"W: **5184148**  
60"W: **5184160**  
72"W: **5184172**

2-digit add codes	
---	---
---	---
---	---

**Factory-Installed Adds** (must be ordered with fume hood – not sold separately):

- 01** 52005 Airflow Monitor
- 02** 52006 Digital Airflow Monitor
- 03** External Vacuum Breaker (as required by specific local, city or state codes)
- 04** Remote Air
- 05** Remote Gas
- 06** Remote Vacuum

### CONSTRUCTION FEATURES

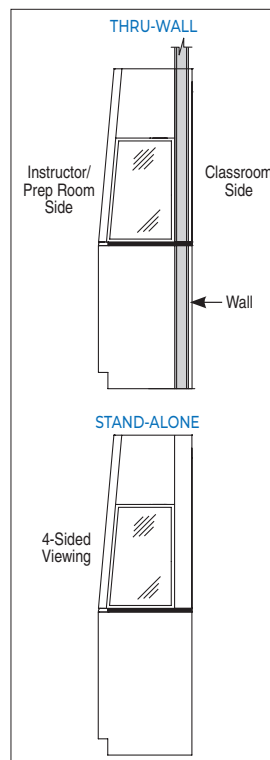
- Solid galvanized frame construction allows disassembly for constricted installation access areas
- Full view safety glass back
- Powder coat exterior finishes
- Shaft drive sash
- LED light fixture
- Stainless steel full width finger lift sash
- 10" exhaust duct collar
- Secondary containment trough

### STANDARD EQUIPMENT (factory-installed)

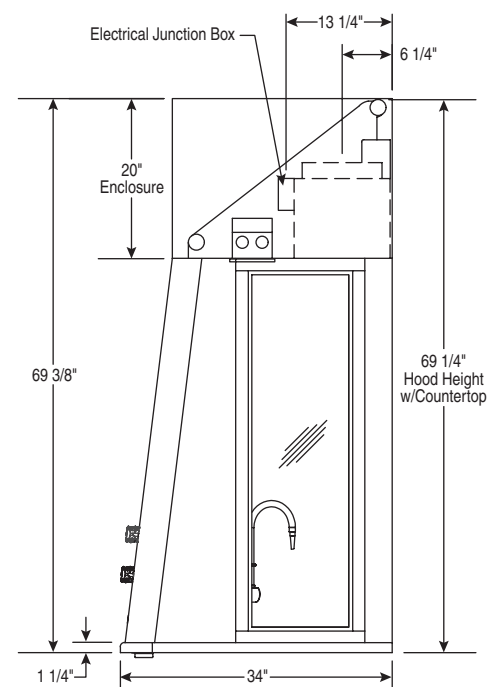
- 2 GFI duplex
- Blower switch
- Light switch
- Cup sink
- Remote cold water faucet with in-line vacuum breaker
- Remote gas fixture
- Black epoxy 1/4" dished top

### OPTION ACCESSORIES

- 52001 Ceiling Enclosure
- 52004 Lattice Assembly
- 52005 Airflow Monitor
- 52006 Digital Airflow Monitor
- Fume Hood Base

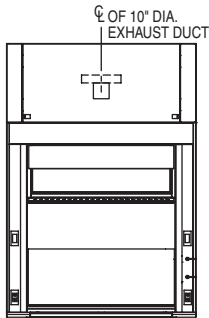


FIXED REAR VIEW WINDOW

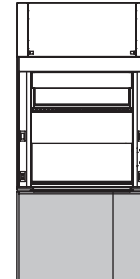


BASE CABINETS

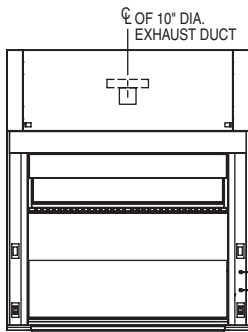
**5184048 / 5184148**



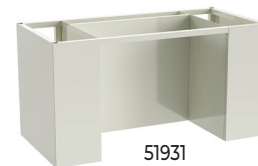
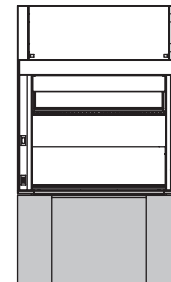
	<b>W</b>	<b>H</b>	<b>D</b>
Superstructure:	48	69 <sup>3</sup> / <sub>8</sub>	34
Worktop:	48	1 <sup>1</sup> / <sub>4</sub>	30
Hood Opening:	45 <sup>3</sup> / <sub>8</sub>	29	
Exhaust Parameters:	770 CFM	.24 SP	
Shipping Weight:	400 pounds (approx.)		
	(hood only)		



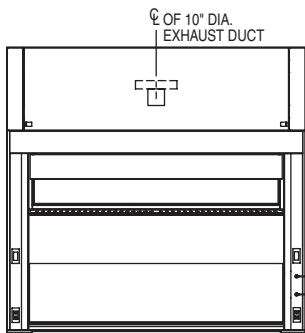
**5184060 / 5184160**



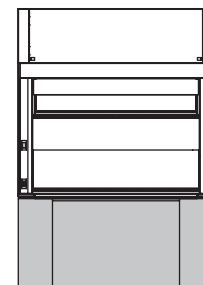
	<b>W</b>	<b>H</b>	<b>D</b>
Superstructure:	60	69 <sup>3</sup> / <sub>8</sub>	34
Worktop:	60	1 <sup>1</sup> / <sub>4</sub>	30
Hood Opening:	57 <sup>3</sup> / <sub>8</sub>	29	
Exhaust Parameters:	1000 CFM	.30 SP	
Shipping Weight:	480 pounds (approx.)		
	(hood only)		



**5184072 / 5184172**

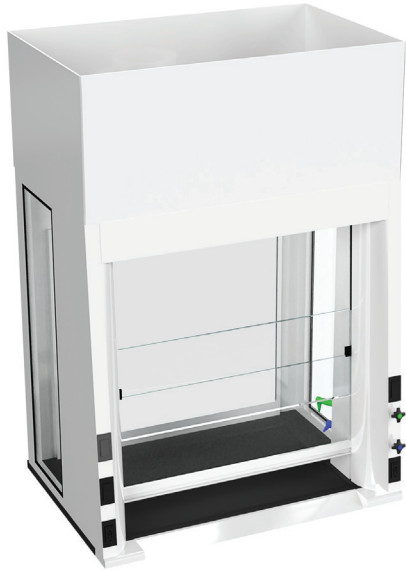


	<b>W</b>	<b>H</b>	<b>D</b>
Superstructure:	72	69 <sup>3</sup> / <sub>8</sub>	34
Worktop:	72	1 <sup>1</sup> / <sub>4</sub>	30
Hood Opening:	69 <sup>3</sup> / <sub>8</sub>	29	
Exhaust Parameters:	1250 CFM	.39 SP	
Shipping Weight:	560 pounds (approx.)		
	(hood only)		





**ADVANTAGE  
SCIENTIFIC** GEN II



**51850 STYLE**

ADA (Americans with Disabilities Act) student workstation hood is designed for front face vertical sash operation and 3-sided viewing (front and both ends). High performance workstation hood is ideal for stand-alone application against a wall. Workstation hoods can also be placed back-to-back (double face) and end-to-end, forming island or peninsula arrangements. Great multi-use in a high participation laboratory setting.

Hood incorporates both by-pass and airfoil with retainer spill trough to protect wheelchair users. Cup sink and remote lever control fixtures are positioned forward and lower within ADA specifications.

The GEN II design allows use as a single- or multi-unit exhaust blower setup. Hood fascia has 42" high clear sight view. Blower and airflow balancing required by HVAC contractor.

3 models available: 48"W: **5185048**  
60"W: **5185060**  
72"W: **5185072**

**51851 CUSTOM**

Same as 51850, customized with factory-installed adds.

3 models available: 48"W: **5185148**  
60"W: **5185160**  
72"W: **5185172**

2-digit add codes	
---	---
---	---
---	---

Factory-Installed Adds (must be ordered with fume hood – not sold separately):

- 01 52005 Airflow Monitor
- 02 52006 Digital Airflow Monitor
- 03 External Vacuum Breaker (as required by specific local, city or state codes)
- 04 Remote Air
- 05 Remote Gas
- 06 Remote Vacuum

**CONSTRUCTION FEATURES**

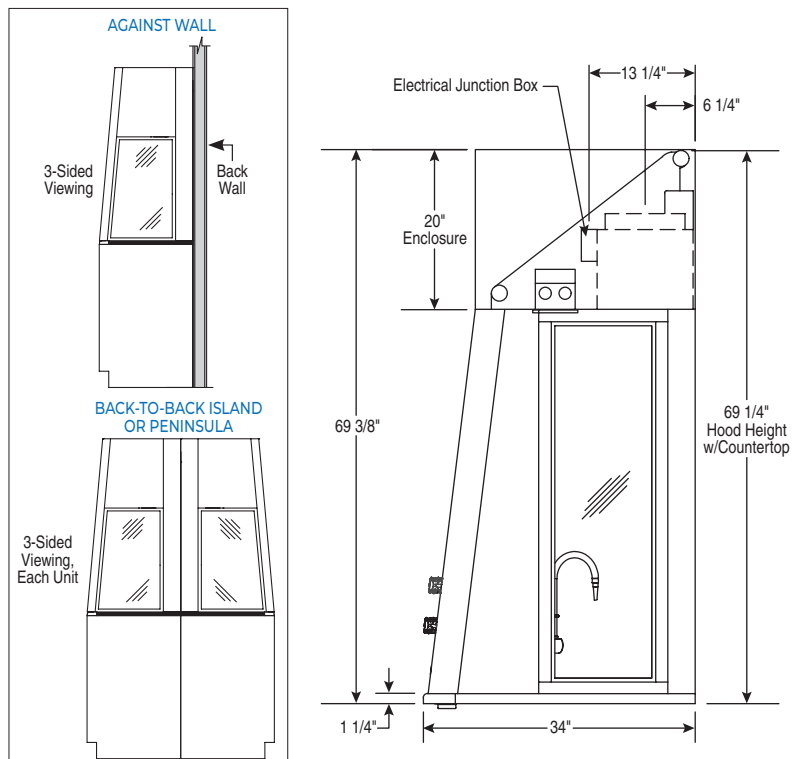
- Solid galvanized frame construction allows disassembly for constricted installation access areas
- Polysin back panel
- Powder coat exterior finishes
- Shaft drive sash
- LED light fixture
- Stainless steel full width finger lift sash
- 10" exhaust duct collar
- Secondary containment trough

**STANDARD EQUIPMENT (factory-installed)**

- 2 GFI duplex
- Blower switch
- Light switch
- Cup sink
- Remote cold water faucet with in-line vacuum breaker
- Remote gas fixture
- Black epoxy 1/4" dished top

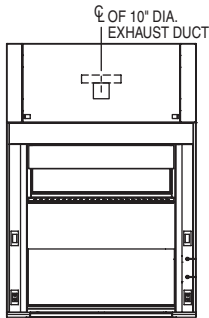
**OPTION ACCESSORIES**

- 52001 Ceiling Enclosure
- 52004 Lattice Assembly
- 52005 Airflow Monitor
- 52006 Digital Airflow Monitor
- Fume Hood Base

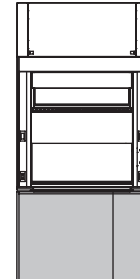


## BASE CABINETS

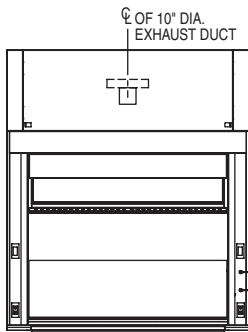
### 5184048 / 5184148



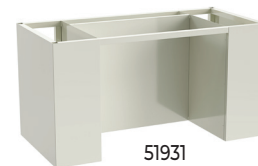
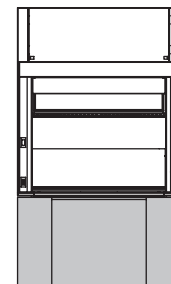
	<b>W</b>	<b>H</b>	<b>D</b>
Superstructure:	48	69 <sup>3</sup> / <sub>8</sub>	34
Worktop:	48	1 <sup>1</sup> / <sub>4</sub>	30
Hood Opening:	45 <sup>3</sup> / <sub>8</sub>	29	
Exhaust Parameters:	770 CFM	.24 SP	
Shipping Weight:	400 pounds (approx.)		
(hood only)			



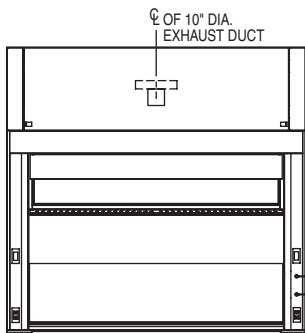
### 5184060 / 5184160



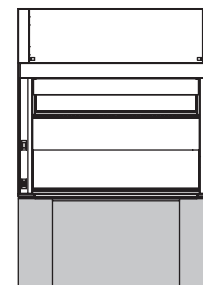
	<b>W</b>	<b>H</b>	<b>D</b>
Superstructure:	60	69 <sup>3</sup> / <sub>8</sub>	34
Worktop:	60	1 <sup>1</sup> / <sub>4</sub>	30
Hood Opening:	57 <sup>3</sup> / <sub>8</sub>	29	
Exhaust Parameters:	1000 CFM	.30 SP	
Shipping Weight:	480 pounds (approx.)		
(hood only)			



### 5184072 / 5184172

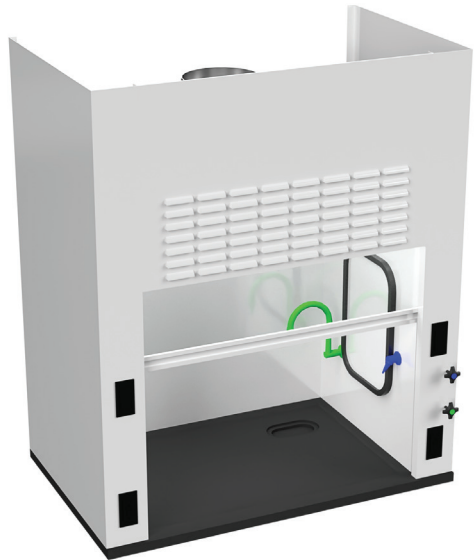


	<b>W</b>	<b>H</b>	<b>D</b>
Superstructure:	72	69 <sup>3</sup> / <sub>8</sub>	34
Worktop:	72	1 <sup>1</sup> / <sub>4</sub>	30
Hood Opening:	69 <sup>3</sup> / <sub>8</sub>	29	
Exhaust Parameters:	1250 CFM	.39 SP	
Shipping Weight:	560 pounds (approx.)		
(hood only)			





**ADVANTAGE  
SCIENTIFIC** GEN II



**51800 STYLE**

By-pass fume hood. Value and performance in a solid design mounted on a dished epoxy top. Unit has a 29" high opening sash and is equipped with convenient remote operated fixtures.

3 models available: 48"W: **5180048**  
60"W: **5180060**

**51801 CUSTOM**

Same as 51800, customized with factory-installed adds.

3 models available: 48"W: **5180148**  
60"W: **5180160**

2-digit add codes	
---	---
---	---

Factory-Installed Adds (must be ordered with fume hood – not sold separately):

- 01 52005 Airflow Monitor
- 02 52006 Digital Airflow Monitor
- 03 External Vacuum Breaker (as required by specific local, city or state codes)
- 04 Remote Air
- 05 Remote Gas
- 06 Remote Vacuum

**CONSTRUCTION FEATURES**

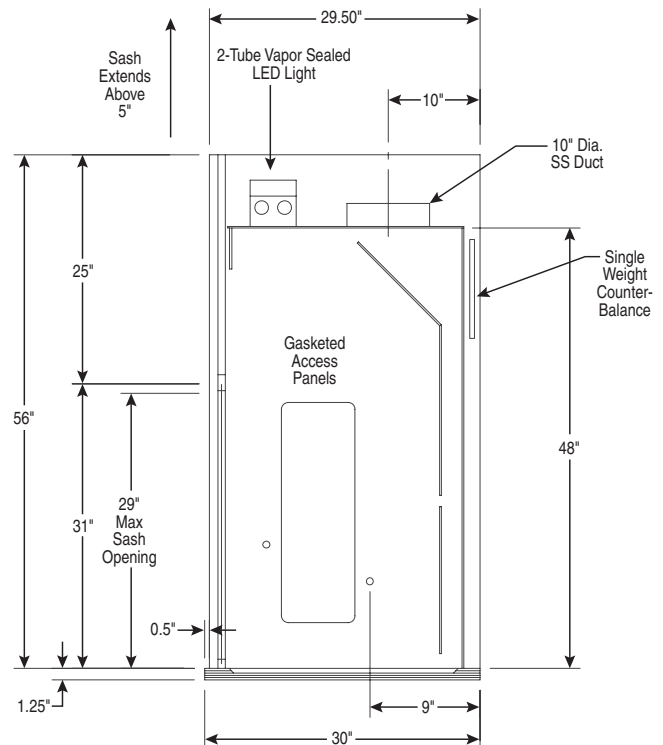
- Galvanized frame construction
- Powder coat exterior finishes
- Polysin liner
- LED light fixture
- Full width finger lift sash
- 10" exhaust duct collar

**STANDARD EQUIPMENT (factory-installed)**

- 2 GFI duplex
- Blower switch
- Light switch
- Cup sink
- Remote cold water gooseneck faucet with in-line vacuum breaker
- Remote gas fixture
- Black epoxy 1/4" dished top

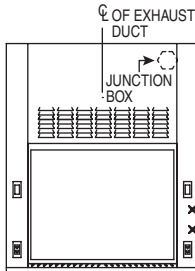
**OPTION ACCESSORY**

- 52001 Ceiling Enclosure
- 52005 Airflow Monitor
- 52006 Digital Airflow Monitor
- Fume Hood Base



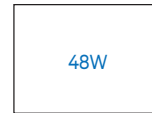
## BASE CABINETS (SEE OFFERING BELOW)

### 5180048 / 5180148



	W	H	D
Superstructure:	48	56	29 1/2
Worktop:	48	1 1/4	30
Hood Opening:	43	29	
Hood View:	43	36	
Exhaust Parameters:	833 CFM		.33 SP
Hood Weight:	175 pounds (approx.)		

48" BASE CABINET OR  
TWO 24" BASE CABINETS  
(ANY COMBINATION)

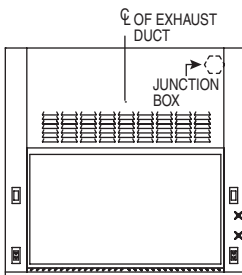


48W  
51903  
41002 (28D)



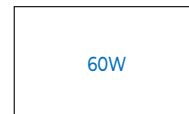
24W 24W  
51900 51900  
51910 51910  
51920 51920

### 5180060 / 5180160

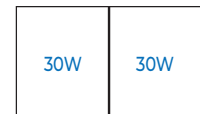


	W	H	D
Superstructure:	60	56	29 1/2
Worktop:	60	1 1/4	30
Hood Opening:	55	29	
Hood View:	55	36	
Exhaust Parameters:	1100 CFM		.34 SP
Hood Weight:	200 pounds (approx.)		

60" BASE CABINET OR  
TWO 30" BASE CABINETS  
(ANY COMBINATION)

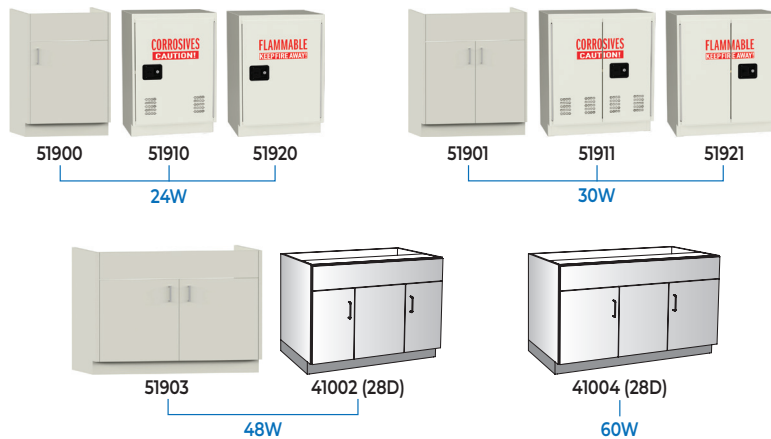


60W  
41004 (28D)



30W 30W  
51901 51901  
51911 51911  
51921 51921

## BASE CABINET OFFERING



**ADVANTAGE  
SCIENTIFIC** GEN II

**52050 STYLE**



The GEN II ductless portable fume hood – complete with mobile cart base – is for chemical and powder applications. Designed for applications where a fume hood is imperative, and versatility is a necessity. The fan/filter housing and control panel sit atop a fully welded tube chamber with plexiglass windows for viewing from all four sides. The front has a fold up door to allow for easy loading and unloading of apparatus and experiments.

One filter will handle the majority of chemicals, but the stackable filter system allows for multiple filtration configurations.

Available filters:

- AS For solvents
- BE+ For solvents and acids
- F For formaldehydes
- K For ammonia
- H14 For powders

1 model available: **52050347728:** 33 1/2"W x 76 1/2"H x 28"D

**END USER QUESTIONNAIRE INFORMATION  
REQUIRED TO PROVIDE CORRECT FILTER MEDIA.**

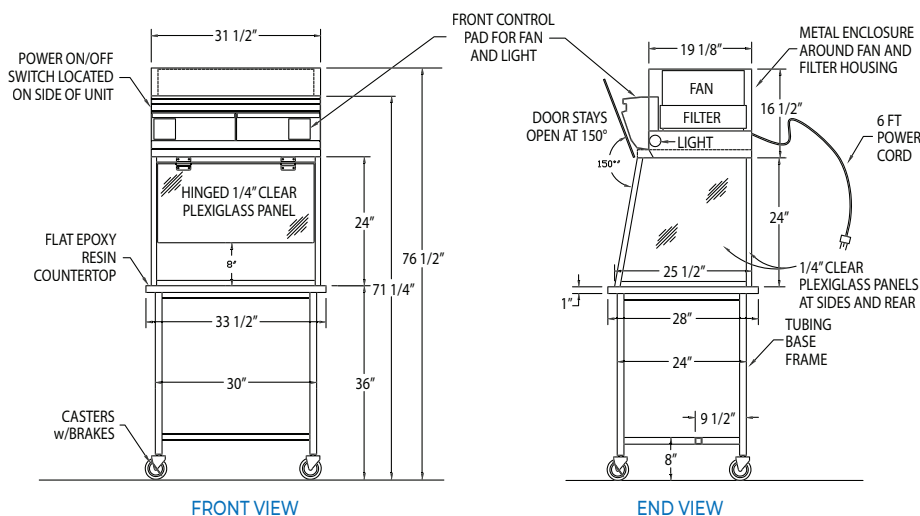
**STANDARD EQUIPMENT**

(factory-installed)

- Interactive programmable alarm system (reminder for saturation testing)
- Pressurized detection chamber (manually detect filter saturation)
- Internal fluorescent light (tubular 18W, 500 Lux IP68)
- Painted steel construction
- 6 ft. power cord

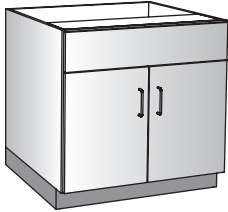
**OPTION ACCESSORY**

- 52008 Particulate (HEPA) filter





**STANDING HEIGHT  
BASE CABINET**



APPLICATION:

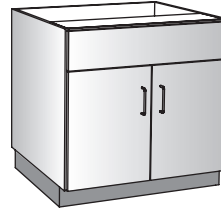
31D: 51805/51806, 51810/51811,  
51815/51816, 51825/51826,  
51845/51846 Fume Hoods

**41000**

W : 36  
H : 35  
D : 31

- Series Cabinet Construction
- Plain Apron
- Doors
- Removable Back
- Designed to be Used in Pairs for 72W Fume Hoods

**STANDING HEIGHT  
BASE CABINET**



APPLICATION:

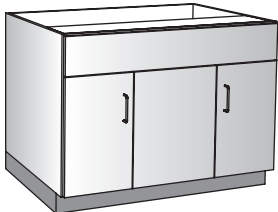
51820/51821 Fume Hoods

**41001**

W : 36  
H : 35  
D : 30

- Series Cabinet Construction
- Plain Apron
- Doors
- Removable Back
- Front and Rear Toe Kicks
- Designed to be Used in Pairs for 72W Fume Hoods

**STANDING HEIGHT  
BASE CABINET**



APPLICATION:

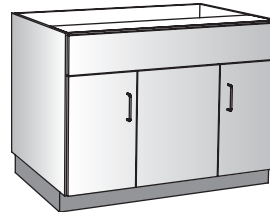
28D: 51800/51801 Fume Hoods  
31D: 51805/51806, 51810/51811,  
51815/51816, 51825/51826,  
51845/51846 Fume Hoods

**41002**

W : 48  
H : 35  
D : 28, 31

- Series Cabinet Construction
- Plain Apron
- Doors
- Removable Back

**STANDING HEIGHT  
BASE CABINET**



APPLICATION:

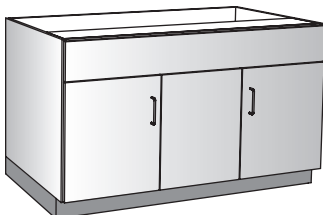
51820/51821 Fume Hoods

**41003**

W : 48  
H : 35  
D : 30

- Series Cabinet Construction
- Plain Apron
- Doors
- Finished Back
- Front and Rear Toe Kicks

**STANDING HEIGHT  
BASE CABINET**



APPLICATION:

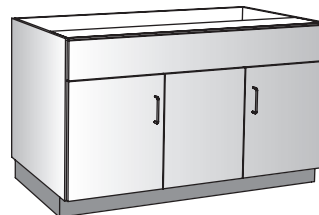
28D: 51800/51801 Fume Hoods  
31D: 51805/51806, 51810/51811,  
51815/51816, 51825/51826,  
51845/51846 Fume Hoods

**41004**

W : 60  
H : 35  
D : 28, 31

- Series Cabinet Construction
- Plain Apron
- Doors
- Removable Back

**STANDING HEIGHT  
BASE CABINET**



APPLICATION:

51820/51821 Fume Hoods

**41005**

W : 60  
H : 35  
D : 30

- Series Cabinet Construction
- Plain Apron
- Doors
- Finished Back
- Front and Rear Toe Kicks

## STANDING HEIGHT BASE CABINET



Actual: 34 3/4"H x 22 3/8"D

### 51900

W : 24  
H : 35  
D : 24

- Powder Coated Steel Construction
- Right Hinge Door with Full Access Opening
- Open Back
- Adjustable Shelf

## ADA HEIGHT BASE CABINET



Actual: 31 3/4"H x 22 3/8"D

### 51930

W : 48  
H : 32  
D : 24

- Powder Coated Steel Construction
- Right Hand Chase
- Open Design Allows Wheelchair Access

## STANDING HEIGHT BASE CABINET



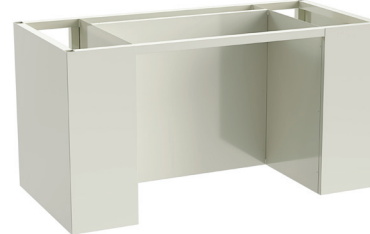
Actual: 34 3/4"H x 22 3/8"D

### 51901

W : 30  
H : 35  
D : 24

- Powder Coated Steel Construction
- Double Doors with Full Access Opening
- Open Back
- Adjustable Shelf

## ADA HEIGHT BASE CABINET



Actual: 31 3/4"H x 22 3/8"D

### 51931

W : 60  
H : 32  
D : 24

- Powder Coated Steel Construction
- Left and Right Hand Chases
- Open Design Allows Wheelchair Access

## STANDING HEIGHT BASE CABINET



Actual: 34 3/4"H x 22 3/8"D

### 51902

W : 36  
H : 35  
D : 24

- Powder Coated Steel Construction
- Double Doors with Full Access Opening
- Open Back
- Adjustable Shelf

## ADA HEIGHT BASE CABINET



Actual: 31 3/4"H x 22 3/8"D

### 51932

W : 72  
H : 32  
D : 24

- Powder Coated Steel Construction
- Left and Right Hand Chases
- Open Design Allows Wheelchair Access

## STANDING HEIGHT BASE CABINET



Actual: 34 3/4"H x 22 3/8"D

### 51903

W : 48  
H : 35  
D : 24

- Powder Coated Steel Construction
- Double Doors with Full Access Opening
- Open Back
- Adjustable Shelf

**STANDING HEIGHT  
CORROSIVES BASE CABINET**



Actual: 34 3/4"H x 18 3/8"D

**51910**

W : 24  
H : 35  
D : 18

- Vented Right Hinge Door
- Reinforced Steel with Hi-Tech Performance Polymer Alloy Coating Which Provides 100% Coverage Against Corrosion
- 3-Point Locking System
- Vent Kit Provided

**STANDING HEIGHT  
FLAMMABLES BASE CABINET**



Actual: 34 3/4"H x 18 3/8"D

**51920**

W : 24  
H : 35  
D : 18

- Right Hinge Door
- 3-Point Locking System
- Certified to Meet NFPA 45

**STANDING HEIGHT  
CORROSIVES BASE CABINET**



Actual: 34 3/4"H x 18 3/8"D

**51911**

W : 30  
H : 35  
D : 18

- Vented Double Doors
- Reinforced Steel with Hi-Tech Performance Polymer Alloy Coating Which Provides 100% Coverage Against Corrosion
- 3-Point Locking System
- Vent Kit Provided

**STANDING HEIGHT  
FLAMMABLES BASE CABINET**



Actual: 34 3/4"H x 18 3/8"D

**51921**

W : 30  
H : 35  
D : 18

- Double Doors
- 3-Point Locking System
- Certified to Meet NFPA 45

**STANDING HEIGHT  
CORROSIVES BASE CABINET**



Actual: 34 3/4"H x 18 3/8"D

**51912**

W : 36  
H : 35  
D : 18

- Vented Double Doors
- Reinforced Steel with Hi-Tech Performance Polymer Alloy Coating Which Provides 100% Coverage Against Corrosion
- 3-Point Locking System
- Vent Kit Provided

**STANDING HEIGHT  
FLAMMABLES BASE CABINET**



Actual: 34 3/4"H x 18 3/8"D

**51922**

W : 36  
H : 35  
D : 18

- Double Doors
- 3-Point Locking System
- Certified to Meet NFPA 45

**FLAMMABLES  
MOBILE CABINET**



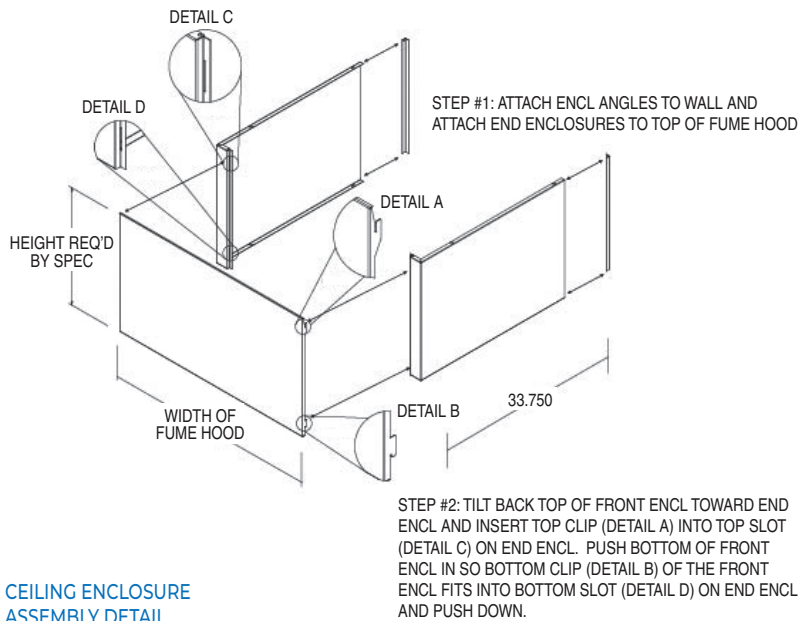
Actual: 28 3/4"H x 18 3/8"D

**51940**

W : 36  
H : 29  
D : 18

- 3-Point Locking System
- 3" Casters

**CEILING ENCLOSURES**



**CEILING ENCLOSURE ASSEMBLY DETAIL**

**CEILING ENCLOSURES**

48"W: **5200148**  
60"W: **5200160**  
72"W: **5200172**

W : 48, 60, 72  
H : 08, 09, 10  
D : VARIES

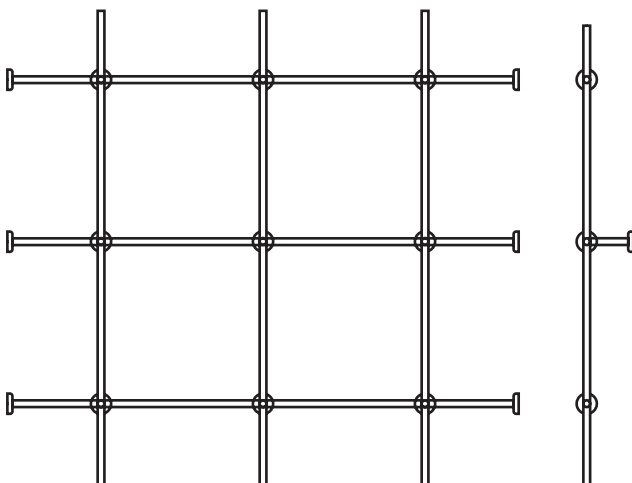
- 08H = for 8' Ceiling
- 09H = for 9' Ceiling
- 10H = for 10' Ceiling

The 52001 Series Ceiling Enclosures provide a professional, finished design in any setting. Ceiling enclosures are fabricated of cold rolled steel and finished to match the fume hood superstructure. Ceiling enclosures extend from top of hood to ceiling height or soffit.

To specify, provide model number and size of hood, plus floor-to-ceiling or floor-to-soffit dimension.



**LATTICE ASSEMBLIES**



**52004 SERIES LATTICE ASSEMBLIES**

The 52004 Series Lattice Assemblies consist of 1/2" diameter aluminum apparatus rods with side mounting plates and cross clamps.

Lattice assembly may be added to hood in field when not ordered with hood.

To specify, provide model number and size of hood.

### AIRFLOW MONITORS ARE HIGHLY RECOMMENDED FOR USE.

<b>Alarm Range</b>	30-400 fpm (.15 - 2.0 m/s)
<b>Accuracy</b>	Face velocity accuracy +/- 10%
<b>Airflow Sensor</b>	On-board or remote sensor
<b>Calibration</b>	Single or 2-point (Installer Selectable)
<b>Low Air Alarm Delay</b>	Fixed 5 seconds
<b>Relay Output</b>	1--( Low Air Alarm)
<b>Analog Output</b>	Not Available
<b>Relay Input</b>	2 - Night setback and sash high
<b>Comm. Port</b>	RS232 - Can be connected via serial interface to LAN network (Full hood performance software reporting available)
<b>Sash Height Indication</b>	Yes - using a micro switch or Proximity switch input. With repeat alarm feature factory set to 5 minutes. (Can be adjusted via laptop up to 30 min.)
<b>Night Setback</b>	Yes - using a relay input
<b>External Alarm Indication</b>	Not available
<b>Power Requirement</b>	Input - 120VAC, 60Hz / Output - 15VDC, 500ma
<b>Display - Visual</b>	LED: red, alarm; green, normal
<b>Alarm Indication</b>	Red LED and audible alarm
<b>Horn Silence</b>	Yes - temporary
<b>Mounting</b>	Semi Flush
<b>Operating Temperature</b>	55-86 F (13-30 C)
<b>Storage Temperature</b>	-40-150 F (-40-65 C)
<b>Instrument Dimensions</b>	Instrument Case: 5.2" H x 3.19" W x 1.97" D (132mm H x 81mm W x 50mm D)
<b>Agency Listings</b>	UL and CE

### 52005 AIRFLOW MONITOR



<b>Display Range</b>	0-999 fpm (0 - 5.0 m/s)
<b>Alarm Range</b>	0-999 fpm (0 - 5.0 m/s)
<b>Field Set-Up</b>	2-point velocity calibration ( with on-screen instructions )
<b>Accuracy</b>	Sensor / Display Resolution 1 fpm / Face Velocity Accuracy +/-10%
<b>Alarm Delays</b>	User Configurable - 0 to 60 seconds
<b>Relay Output</b>	4 ( 1 on board - 3 on optional plug in relay interface unit )
<b>Analog Output</b>	0-10V Output, Directly proportional to velocity (Optional)
<b>Relay Input</b>	3
<b>Comm. Port</b>	RS232 - Can be connected via Serial Interface to LAN network ( Full Software Available)
<b>Sash High Indication</b>	Yes, with separate plug-in connection
<b>Night Setback</b>	Yes
<b>External Alarm Indication</b>	Yes
<b>Power Requirement</b>	Input-120VAC, 60Hz
<b>Units</b>	Output-15VDC, 500ma
<b>Display-Visual</b>	English and Metric (user selectable)
<b>Alarm Indication</b>	Analog bar graph or Fault Timeline / LEDs: red, alarm; yellow, caution; green, normal / Digital display of velocity reading (can be turned off)
<b>Horn Silence</b>	Yes (temporary / permanent / automatic depending on type of alarm or external input)
<b>Mounting</b>	Semi Flush
<b>Operating Temperature</b>	55-86 F ( 13-30 C )
<b>Storage Temperature</b>	-40-150 F (-40-65 C )
<b>Instrument Dimensions</b>	Instrument Case: 5.2" H x 3.19" W x 1.14" D ( 132mm H x 81mm W x 29mm D )
<b>Agency Listings</b>	UL and CE

### 52006 DIGITAL AIRFLOW MONITOR

